

Product datasheet for **AP15290PU-N**

PP2A-alpha (PPP2CA) (N-term) Rabbit Polyclonal Antibody

Product data:

Product Type:	Primary Antibodies
Applications:	IHC, WB
Recommended Dilution:	Peptide ELISA: 1/1,000. Western blotting: 1/1000. Immunohistochemistry: 1/50-1/100.
Reactivity:	Human
Host:	Rabbit
Isotype:	Ig
Clonality:	Polyclonal
Immunogen:	KLH conjugated synthetic peptide peptide between 1~30 amino acids from the N-terminal region of Human PPP2CA/B.
Specificity:	This antibody recognizes PPP2CA/PPP2CB.
Formulation:	PBS with 0.09% (W/V) Sodium Azide as preservative. State: Purified State: Liquid purified IgG fraction.
Concentration:	lot specific
Purification:	Prepared by Saturated Ammonium Sulfate (SAS) precipitation followed by dialysis against PBS.
Conjugation:	Unconjugated
Storage:	Store the antibody undiluted at 2-8°C for one month or (in aliquots) at -20°C for longer. Avoid repeated freezing and thawing.
Stability:	Shelf life: one year from despatch.
Gene Name:	protein phosphatase 2 catalytic subunit alpha
Database Link:	Entrez Gene 5515 Human P67775



[View online »](#)

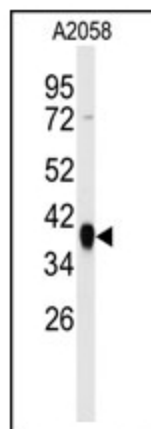
Background: PPP2CA/B represents the phosphatase 2A catalytic subunit. Protein phosphatase 2A is one of the four major Ser/Thr phosphatases, and it is implicated in the negative control of cell growth and division. It consists of a common heteromeric core enzyme, which is composed of a catalytic subunit and a constant regulatory subunit, that associates with a variety of regulatory subunits.

Synonyms: Protein Phosphatase 2A, PP2A-alpha, Replication protein C, PP2A-beta

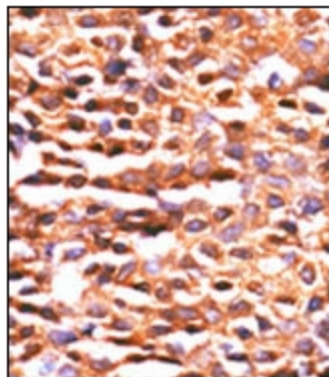
Protein Families: Druggable Genome, Phosphatase, Transcription Factors

Protein Pathways: Long-term depression, Oocyte meiosis, TGF-beta signaling pathway, Tight junction, Wnt signaling pathway

Product images:



Western blot analysis: PPP2CA/PPP2CB antibody staining of A2058 cell line lysates at 35 ug.



Immunohistochemistry: PPP2CA/PPP2CB antibody staining of Formalin-Fixed Paraffin-Embedded Human cancer tissue followed by peroxidase conjugated secondary antibody and DAB staining.