

Product datasheet for **AP15286PU-N**

CTDSP2 (N-term) Rabbit Polyclonal Antibody

Product data:

Product Type:	Primary Antibodies
Applications:	IHC, WB
Recommended Dilution:	ELISA: 1/1,000. Western Blot: 1/100 - 1/250. Immunohistochemistry: 1/50 - 1/100.
Reactivity:	Human, Mouse
Host:	Rabbit
Isotype:	Ig
Clonality:	Polyclonal
Immunogen:	This antibody is generated from rabbits immunized with a KLH conjugated synthetic peptide selected from the N-terminal region of human CTDSP2.
Specificity:	This antibody reacts to CTDSP2.
Formulation:	PBS with 0.09% (W/V) sodium azide State: Purified State: Liquid purified Ig
Concentration:	lot specific
Purification:	Prepared by Saturated Ammonium Sulfate (SAS) precipitation followed by dialysis against PBS
Conjugation:	Unconjugated
Storage:	Store the antibody undiluted at 2-8°C for one month or (in aliquots) at -20°C for longer. Avoid repeated freezing and thawing.
Stability:	Shelf life: one year from despatch.
Gene Name:	CTD small phosphatase 2
Database Link:	Entrez Gene 52468 Mouse Entrez Gene 10106 Human O14595



[View online »](#)

Background:

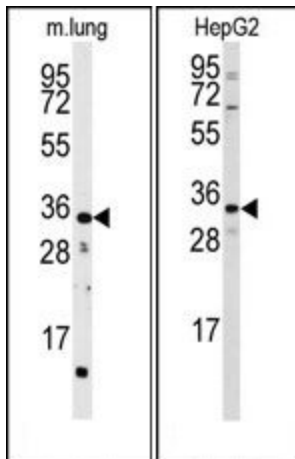
CTDSP2 is one of several small CTD phosphatases (SCP). It has been proposed that SCP activity is an evolutionarily conserved transcriptional regulator that acts globally to silence neuronal genes. In addition, expression of phosphatase CTDSP2 mRNA is enhanced in several cancer cell lines with amplification of the CTDSP2 and CDK4 genes, and CTDSP2 coamplifies with CDK4 in some primary sarcomas. CTDSP2 may contribute to the development of a subset of sarcomas.

Synonyms:

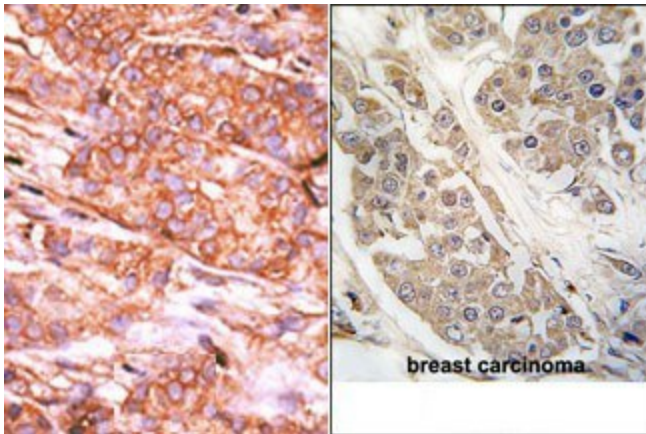
Protein OS-4, Small CTD phosphatase 2, SCP2, NLI-interacting factor 2

Protein Families:

Druggable Genome, Phosphatase

Product images:


(LEFT)Western blot analysis of anti-CTDSP2 Antibody (N-term) in mouse lung tissue lysates (35ug/lane). CTDSP2 (arrow) was detected using the purified Pab (1:60 dilution). (RIGHT)Western blot analysis of anti-CTDSP2 Antibody (N-term) in HepG2 cell line lysates (35ug/lane). hCTDSP2-S27 (arrow) was detected using the purified Pab (1:60dilution).



(LEFT)Formalin-fixed and paraffin-embedded human cancer tissue reacted with the primary antibody, which was peroxidase-conjugated to the secondary antibody, followed by AEC staining. (RIGHT)Formalin-fixed and paraffin-embedded human breast carcinoma tissue reacted with CTDSP2 Antibody (N-term), which was peroxidase-conjugated to the secondary antibody, followed by DAB staining.