

Product datasheet for **AP15280PU-N**

DUSP15 (N-term) Rabbit Polyclonal Antibody

Product data:

Product Type:	Primary Antibodies
Applications:	IHC, WB
Recommended Dilution:	ELISA: 1/1,000. Western blotting: 1/100 - 1/500. Immunohistochemistry: 1/50 - 1/100.
Reactivity:	Human
Host:	Rabbit
Isotype:	Ig
Clonality:	Polyclonal
Immunogen:	This antibody is generated from rabbits immunized with a KLH conjugated synthetic peptide selected from the N-terminal region of human DUSP15.
Specificity:	This antibody reacts to DUSP15.
Formulation:	PBS with 0.09% (W/V) sodium azide State: Purified State: Liquid purified Ig
Concentration:	lot specific
Purification:	Protein G column, eluted with high and low pH buffers and neutralized immediately, followed by dialysis against PBS
Conjugation:	Unconjugated
Storage:	Store the antibody undiluted at 2-8°C for one month or (in aliquots) at -20°C for longer. Avoid repeated freezing and thawing.
Stability:	Shelf life: one year from despatch.
Gene Name:	dual specificity phosphatase 15
Database Link:	Entrez Gene 128853 Human Q9H1R2
Background:	DUSP15 belongs to the non-receptor class of the protein-tyrosine phosphatase family. This protein has both protein-tyrosine phosphatase activity and serine/threonine-specific phosphatase activity, and therefore is known as a dual specificity phosphatase.

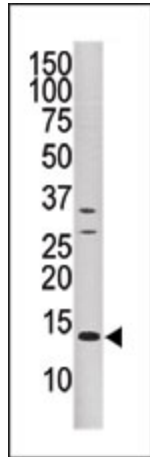


[View online »](#)

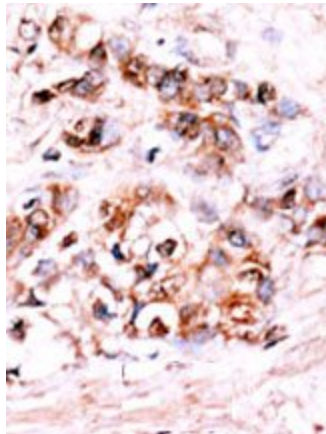
Synonyms: C20orf57, VHY

Protein Families: Druggable Genome, Phosphatase

Product images:



Western blot analysis of anti-DUSP15 Pab in CEM cell line tissue lysate (35ug/lane). DUSP15 (arrow) was detected using the purified Pab (1:60 dilution).



Formalin-fixed and paraffin-embedded human cancer tissue reacted with the primary antibody, which was peroxidase-conjugated to the secondary antibody, followed by AEC staining.