

Product datasheet for **AP15272PU-N**

DUSP10 (N-term) Rabbit Polyclonal Antibody

Product data:

Product Type:	Primary Antibodies
Applications:	IHC, WB
Recommended Dilution:	ELISA: 1/1,000. Western blotting: 1/100 - 1/500. Immunohistochemistry: 1/50 - 1/100.
Reactivity:	Human, Mouse
Host:	Rabbit
Isotype:	Ig
Clonality:	Polyclonal
Immunogen:	This antibody is generated from rabbits immunized with a KLH conjugated synthetic peptide selected from the N-terminal region of human DUSP10.
Specificity:	This antibody reacts to DUSP10.
Formulation:	PBS with 0.09% (W/V) sodium azide State: Purified State: Liquid purified Ig
Concentration:	lot specific
Purification:	Protein G column, eluted with high and low pH buffers and neutralized immediately, followed by dialysis against PBS
Conjugation:	Unconjugated
Storage:	Store the antibody undiluted at 2-8°C for one month or (in aliquots) at -20°C for longer. Avoid repeated freezing and thawing.
Stability:	Shelf life: one year from despatch.
Gene Name:	dual specificity phosphatase 10
Database Link:	Entrez Gene 11221 Human Q9Y6W6



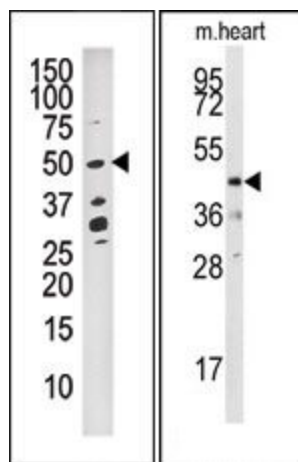
[View online »](#)

Background:

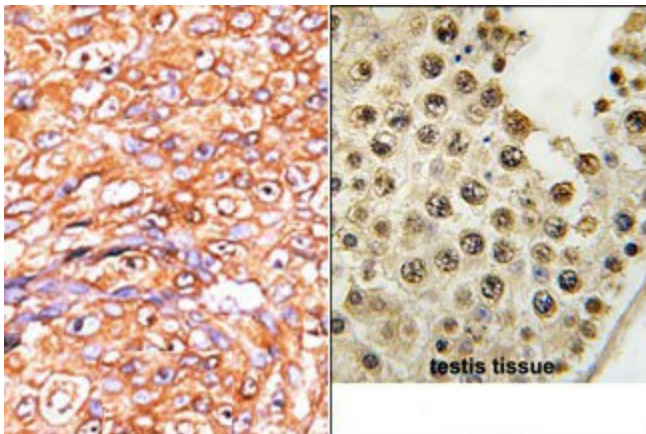
Dual specificity protein phosphatases inactivate their target kinases by dephosphorylating both the phosphoserine/threonine and phosphotyrosine residues. They negatively regulate members of the MAPK superfamily (MAPK/ERK, SAPK/JNK, p38), which is associated with cellular proliferation and differentiation. Different members of this family of dual specificity phosphatases show distinct substrate specificities for MAPKs, different tissue distribution and subcellular localization, and different modes of inducibility of their expression by extracellular stimuli. DUSP10 binds to and inactivates p38 and SAPK/JNK, but not MAPK/ERK. Its subcellular localization is unique; it is evenly distributed in both the cytoplasm and the nucleus. The protein is widely expressed in various tissues and organs, and its expression is elevated by stress stimuli.

Synonyms:

Dual specificity protein phosphatase 10, MAP kinase phosphatase 5, MKP-5

Product images:


(LEFT)Western blot analysis of anti-DUSP10 Pab in CEM cell line tissue lysate (35ug/lane). DUSP10 (arrow) was detected using the purified Pab (1:60 dilution). (RIGHT)Western blot analysis of anti-DUSP10 Pab in mouse heart tissue lysates (35ug/lane). DUSP10 (arrow) was detected using the purified Pab (1:60 dilution).



(LEFT)Formalin-fixed and paraffin-embedded human cancer tissue reacted with the primary antibody, which was peroxidase-conjugated to the secondary antibody, followed by AEC staining. (RIGHT)Formalin-fixed and paraffin-embedded human testis tissue reacted with DUSP10 Antibody (N-term), which was peroxidase-conjugated to the secondary antibody, followed by DAB staining.