

Product datasheet for **AP15254PU-N**

PTP4A1 Rabbit Polyclonal Antibody

Product data:

Product Type:	Primary Antibodies
Applications:	WB
Recommended Dilution:	ELISA: 1/1000. Western Blot: 1/50-1/100.
Reactivity:	Human, Mouse
Host:	Rabbit
Isotype:	Ig
Clonality:	Polyclonal
Immunogen:	Recombinant protein encoding full length of Human PRL1
Specificity:	This antibody recognizes Human and Mouse PRL1.
Formulation:	PBS containing 0.09% (W/V) Sodium Azide as preservative State: Purified State: Liquid purified Ig fraction
Concentration:	lot specific
Purification:	Protein G Chromatography, eluted with high and low pH buffers and neutralized immediately, followed by dialysis against PBS
Conjugation:	Unconjugated
Storage:	Store undiluted at 2-8°C for one month or (in aliquots) at -20°C for longer. Avoid repeated freezing and thawing.
Stability:	Shelf life: one year from despatch.
Gene Name:	protein tyrosine phosphatase type IVA, member 1
Database Link:	Entrez Gene 7803 Human Q93096



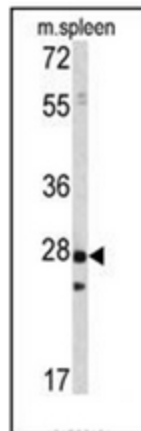
[View online »](#)

Background:

The protein encoded by this gene belongs to a small class of prenylated protein tyrosine phosphatases (PTPs), which contains a PTP domain and a characteristic C-terminal prenylation motif. PTPs are cell signaling molecules that play regulatory roles in a variety of cellular processes. This tyrosine phosphatase is a nuclear protein, but may primarily associate with plasma membrane. The surface membrane association of this protein depends on its C-terminal prenylation. Overexpression of this gene in mammalian cells conferred a transformed phenotype, which implicated its role in the tumorigenesis. Studies in rat suggested that this gene may be an immediate-early gene in mitogen-stimulated cells. PRL phosphatases increase cell proliferation by stimulating progression from G1 into S phase. PRL-1 function is regulated in a cell cycle-dependent manner and implicate PRL-1 in regulating progression through mitosis, possibly by modulating spindle dynamics.

Synonyms:

PRL-1, PTPCAAX1, PTP(CAAXI)

Product images:

Western blot analysis of PRL1 in mouse spleen tissue lysates (35ug/lane). PRL1 Antibody (arrow) was detected using the purified Pab.