

Product datasheet for **AP15253PU-N**

PTP4A3 (C-term) Rabbit Polyclonal Antibody

Product data:

Product Type:	Primary Antibodies
Applications:	WB
Recommended Dilution:	Western blot: 1/100-1/500. Enzyme immunoassay: 1/1000.
Reactivity:	Human
Host:	Rabbit
Isotype:	Ig
Clonality:	Polyclonal
Immunogen:	Synthetic peptide - KLH conjugated - corresponding to the C-terminal region (between 117-147aa) of human PRL3 / PTP4A3.
Specificity:	This antibody reacts to PRL3 / PTP4A3 at C-term.
Formulation:	PBS with 0.09% (W/V) Sodium azide State: Purified State: Liquid purified Ig fraction
Concentration:	lot specific
Purification:	Protein G column, eluted with high and low pH buffers and neutralized immediately, followed by dialysis against PBS
Conjugation:	Unconjugated
Storage:	Store the antibody undiluted at 2-8°C for one month or (in aliquots) at -20°C for longer. Avoid repeated freezing and thawing.
Stability:	Shelf life: one year from despatch.
Gene Name:	protein tyrosine phosphatase type IVA, member 3
Database Link:	Entrez Gene 11156 Human O75365



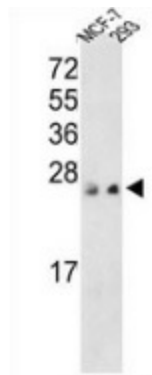
[View online »](#)

Background:

The protein encoded by the PTP4A3 gene belongs to a small class of prenylated protein tyrosine phosphatases (PTPs). PTPs are cell signaling molecules that play regulatory roles in a variety of cellular processes. This class of PTPs contain a PTP domain and a characteristic C-terminal prenylation motif. Studies of this class of PTPs in mice demonstrated that they were prenylated proteins in vivo, which suggested their association with cell plasma membrane. Overexpression of this gene in mammalian cells was reported to inhibit angiotensin-II induced cell calcium mobilization and promote cell growth. Two alternatively spliced variants exist.

Synonyms:

PRL-3, PRL-R

Product images:

Western blot analysis of PRL3/ PTP4A3 (arrow) in MCF-7 and 293 cell line lysates (35ug/lane) using PRL3 / PTP4A3 antibody. (C-term).