

Product datasheet for **AP15246PU-N**

PPM1G (Center) Rabbit Polyclonal Antibody

Product data:

Product Type:	Primary Antibodies
Applications:	WB
Recommended Dilution:	ELISA: 1/1,000. Western blotting: 1/100-1/500.
Reactivity:	Human, Mouse
Host:	Rabbit
Isotype:	Ig
Clonality:	Polyclonal
Immunogen:	This antibody is generated from rabbits immunized with a KLH conjugated synthetic peptide between 157~187 from the center region of Human PPM1G.
Specificity:	This antibody recognizes Protein phosphatase 1G/PPM1G.
Formulation:	PBS with 0.09% (W/V) Sodium Azide as preservative. State: Purified State: Liquid purified Ig fraction.
Concentration:	lot specific
Purification:	Protein G Chromatography, eluted with high and low pH buffers and neutralized immediately, followed by dialysis against PBS.
Conjugation:	Unconjugated
Storage:	Store the antibody undiluted at 2-8°C for one month or (in aliquots) at -20°C for longer. Avoid repeated freezing and thawing.
Stability:	Shelf life: one year from despatch.
Gene Name:	protein phosphatase, Mg ²⁺ /Mn ²⁺ dependent 1G
Database Link:	Entrez Gene 5496 Human O15355



[View online »](#)

Background:

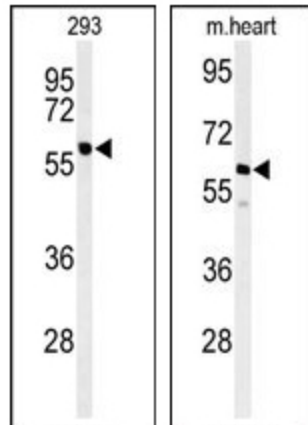
PPM1G is a member of the PP2C family of Ser/Thr protein phosphatases. PP2C family members are known to be negative regulators of cell stress response pathways. This phosphatase is found to be responsible for the dephosphorylation of Pre-mRNA splicing factors, which is important for the formation of functional spliceosome. Studies of a similar gene in mice suggested a role of this phosphatase in regulating cell cycle progression.

Synonyms:

Protein phosphatase 2C isoform gamma, Protein phosphatase 1C, PPM1C, PP2C-gamma

Note:

Calculated MW: 59271 Da

Product images:

Western Blot analysis: PPM1G antibody staining of 293 cell line lysate (Left) and Mouse heart tissue lysate (Right) (35 ug/lane).