

Product datasheet for **AP15243PU-N**

PP1C gamma (PPP1CC) (N-term) Rabbit Polyclonal Antibody

Product data:

Product Type:	Primary Antibodies
Applications:	WB
Recommended Dilution:	ELISA: 1/1,000. Western blotting: 1/100 - 1/500. Flow cytometry.
Reactivity:	Human, Mouse
Host:	Rabbit
Isotype:	Ig
Clonality:	Polyclonal
Immunogen:	This antibody is generated from rabbits immunized with a KLH conjugated synthetic peptide selected from the N-terminal region of human PPP1CC.
Specificity:	This antibody reacts to PPP1CC.
Formulation:	PBS with 0.09% (W/V) sodium azide State: Purified State: Liquid purified Ig
Concentration:	lot specific
Purification:	Protein G column, eluted with high and low pH buffers and neutralized immediately, followed by dialysis against PBS
Conjugation:	Unconjugated
Storage:	Store the antibody undiluted at 2-8°C for one month or (in aliquots) at -20°C for longer. Avoid repeated freezing and thawing.
Stability:	Shelf life: one year from despatch.
Gene Name:	protein phosphatase 1 catalytic subunit gamma
Database Link:	Entrez Gene 5501 Human P36873



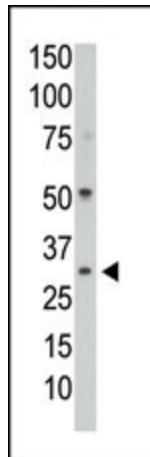
[View online »](#)

Background:

Protein phosphatase-1 (PP1) is 1 of 4 major serine/threonine-specific protein phosphatases involved in the dephosphorylation of a variety of proteins. These enzymes work in opposition to the protein kinases to control the level of phosphorylation. Protein phosphatase (PP1) is essential for cell division, and it participates in the regulation of glycogen metabolism, muscle contractility and protein synthesis, as well as in regulation of ionic conductances and long-term synaptic plasticity. PP1 has 3 catalytic subunits, designated alpha (PPP1CA), beta (PPP1CB), and gamma (PPP1CC).

Synonyms:

PP-1G, PPP1G, PP1gamma

Product images:

The anti-PPP1CC Pab is used in Western blot to detect PPP1CC in mouse colon tissue lysate.