

Product datasheet for **AP15236PU-N**

PTPRN2 (N-term) Rabbit Polyclonal Antibody

Product data:

Product Type:	Primary Antibodies
Applications:	WB
Recommended Dilution:	Western blotting: 1/100 - 1/500.
Reactivity:	Human
Host:	Rabbit
Isotype:	Ig
Clonality:	Polyclonal
Immunogen:	This antibody is generated from rabbits immunized with a KLH conjugated synthetic peptide between 94-125 amino acids from the N-terminal region of human PTPIA2beta.
Specificity:	This antibody reacts to PTPIA2beta.
Formulation:	PBS with 0.09% (W/V) sodium azide State: Purified State: Liquid purified Ig
Concentration:	lot specific
Purification:	Protein G column, eluted with high and low pH buffers and neutralized immediately, followed by dialysis against PBS
Conjugation:	Unconjugated
Storage:	Store the antibody undiluted at 2-8°C for one month or (in aliquots) at -20°C for longer. Avoid repeated freezing and thawing.
Stability:	Shelf life: one year from despatch.
Gene Name:	protein tyrosine phosphatase, receptor type N2
Database Link:	Entrez Gene 5799 Human Q92932



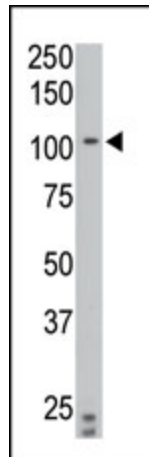
[View online »](#)

Background:

PTPIA2beta is a member of the protein tyrosine phosphatase (PTP) family. PTPs are known to be signaling molecules that regulate a variety of cellular processes including cell growth, differentiation, mitotic cycle, and oncogenic transformation. This PTP possesses an extracellular region, a single transmembrane region, and a single intracellular catalytic domain, and thus represents a receptor-type PTP. The catalytic domain of this PTP is most closely related to PTPRN/IA-2beta. This PTP and PTPRN are both found to be major autoantigens associated with insulin-dependent diabetes mellitus.

Synonyms:

R-PTP-N2, ICAAR, IAR, IA-2beta, Phogrin, KIAA0387

Product images:

The anti-PTPIA2 beta N-term Pab is used in Western blot to detect PTPIA2 beta in C6 cell lysate.