

Product datasheet for **AP15233PU-N**

PTPD1 (PTPN21) (Center) Rabbit Polyclonal Antibody

Product data:

Product Type:	Primary Antibodies
Applications:	IHC, WB
Recommended Dilution:	ELISA: 1/1,000. Western blotting: 1/100 - 1/500. Immunohistochemistry: 1/10 - 1/50.
Reactivity:	Human
Host:	Rabbit
Isotype:	Ig
Clonality:	Polyclonal
Immunogen:	This antibody is generated from rabbits immunized with a KLH conjugated synthetic peptide selected from the center region of human PTPD1.
Specificity:	This antibody reacts to PTPD1.
Formulation:	PBS with 0.09% (W/V) sodium azide State: Purified State: Liquid purified Ig
Concentration:	lot specific
Purification:	Protein G column, eluted with high and low pH buffers and neutralized immediately, followed by dialysis against PBS
Conjugation:	Unconjugated
Storage:	Store the antibody undiluted at 2-8°C for one month or (in aliquots) at -20°C for longer. Avoid repeated freezing and thawing.
Stability:	Shelf life: one year from despatch.
Gene Name:	protein tyrosine phosphatase, non-receptor type 21
Database Link:	Entrez Gene 11099 Human Q16825



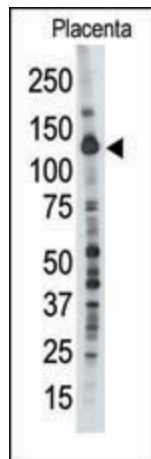
[View online »](#)

Background:

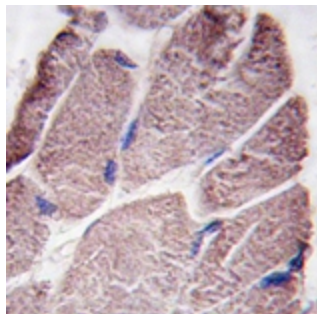
PTPD1 is a member of the protein tyrosine phosphatase (PTP) family. PTPs are known to be signaling molecules that regulate a variety of cellular processes including cell growth, differentiation, mitotic cycle, and oncogenic transformation. This PTP contains an N-terminal domain, similar to cytoskeletal-associated proteins including band 4.1, ezrin, merlin, and radixin. This PTP was shown to specially interact with BMX/ETK, a member of Tec tyrosine kinase family characterized by a multimodular structures including PH, SH3, and SH2 domains. The interaction of this PTP with BMX kinase was found to increase the activation of STAT3, but not STAT2 kinase. Studies of the similar gene in mice suggested the possible roles of this PTP in liver regeneration and spermatogenesis.

Synonyms:

PTPD1; PTPRL10

Product images:

Western blot analysis of anti-PTPD1 Pab in Placenta tissue lysate (35ug/lane). PTPD1 (arrow) was detected using the purified Pab



Formalin-fixed and paraffin-embedded human skeletal muscle tissue reacted with PTPD1 antibody (Center), which was peroxidase-conjugated to the secondary antibody, followed by DAB staining.