

Product datasheet for **AP15198PU-N**

PI 3 Kinase catalytic subunit gamma (PIK3CG) Rabbit Polyclonal Antibody

Product data:

Product Type:	Primary Antibodies
Applications:	WB
Recommended Dilution:	ELISA: 1/1,000. Western blotting: 1/50 - 1/100.
Reactivity:	Human
Host:	Rabbit
Isotype:	Ig
Clonality:	Polyclonal
Immunogen:	This antibody is generated from rabbits immunized with a KLH conjugated synthetic peptide corresponding to amino acid residues surrounding S1100 of human PIK3CG.
Specificity:	This antibody reacts to PIK3CG.
Formulation:	PBS with 0.09% (W/V) sodium azide State: Aff - Purified State: Liquid purified Ig
Concentration:	lot specific
Purification:	Protein A column, followed by peptide affinity purification
Conjugation:	Unconjugated
Storage:	Store the antibody undiluted at 2-8°C for one month or (in aliquots) at -20°C for longer. Avoid repeated freezing and thawing.
Stability:	Shelf life: one year from despatch.
Gene Name:	phosphatidylinositol-4,5-bisphosphate 3-kinase catalytic subunit gamma
Database Link:	Entrez Gene 5294 Human P48736



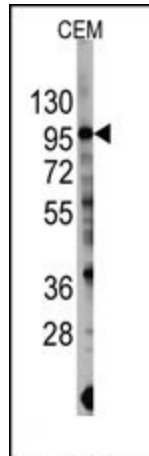
[View online »](#)

Background:

PIK3CG belongs to the pi3/pi4-kinase family of proteins. It is an enzyme that phosphorylates phosphoinositides on the 3-hydroxyl group of the inositol ring. It is an important modulator of extracellular signals, including those elicited by E-cadherin-mediated cell-cell adhesion, which play an important role in maintenance of the structural and functional integrity of epithelia. In addition to its role in promoting assembly of adherens junctions, the protein is thought to play a pivotal role in the regulation of cytotoxicity in NK cells.

Synonyms:

PI3-kinase subunit gamma, PI3K-gamma, p120-PI3K

Product images:

Western blot analysis of anti-PIK3CG Antibody in CEM cell line lysates (35ug/lane). PIK3CG (arrow) was detected using the purified Pab (1:60 dilution).