

## Product datasheet for **AP15195PU-N**

### Choline kinase alpha (CHKA) (C-term) Rabbit Polyclonal Antibody

#### Product data:

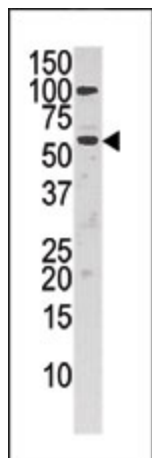
Product Type:	Primary Antibodies
Applications:	WB
Recommended Dilution:	ELISA: 1/1,000. Western blotting: 1/100 - 1/500.
Reactivity:	Human
Host:	Rabbit
Isotype:	Ig
Clonality:	Polyclonal
Immunogen:	This antibody is generated from rabbits immunized with a KLH conjugated synthetic peptide selected from the C-terminal region of human CHK.
Specificity:	This antibody reacts to CHK.
Formulation:	PBS with 0.09% (W/V) sodium azide State: Purified State: Liquid purified Ig
Concentration:	lot specific
Purification:	Protein G column, eluted with high and low pH buffers and neutralized immediately, followed by dialysis against PBS
Conjugation:	Unconjugated
Storage:	Store the antibody undiluted at 2-8°C for one month or (in aliquots) at -20°C for longer. Avoid repeated freezing and thawing.
Stability:	Shelf life: one year from despatch.
Gene Name:	choline kinase alpha
Database Link:	<a href="#">Entrez Gene 1119 Human P35790</a>
Background:	The major pathway for the biosynthesis of phosphatidylcholine occurs via the CDP-choline pathway. Choline kinase alpha is the initial enzyme in the sequence and may play a regulatory role. This protein also catalyzes the phosphorylation of ethanolamine. The antibody for this protein recognizes both isoforms.



[View online »](#)

Synonyms: CHKA, CHK, CKI, CHETK-alpha, Ethanolamine kinase

**Product images:**



Western blot analysis of anti-CHK in HepG2 cell line lysate (35ug/lane).CHK (arrow) was detected using the purified Pab (1:40 dilution).