

Product datasheet for **AP15191PU-N**

GUCY1A2 (C-term) Rabbit Polyclonal Antibody

Product data:

Product Type:	Primary Antibodies
Applications:	IHC, WB
Recommended Dilution:	ELISA: 1/1,000. Western Blot: 1/50 - 1/200. Immunohistochemistry: 1/50 - 1/100.
Reactivity:	Human
Host:	Rabbit
Isotype:	Ig
Clonality:	Polyclonal
Immunogen:	This antibody is generated from rabbits immunized with a KLH conjugated synthetic peptide selected from the C-terminal region of human GUCY1A2.
Specificity:	This antibody reacts with GUCY1A2 (C-term).
Formulation:	PBS with 0.09% (W/V) Sodium Azide as preservative. State: Purified State: Liquid purified Ig fraction.
Concentration:	lot specific
Purification:	Protein G column, eluted with high and low pH buffers and neutralized immediately, followed by dialysis against PBS
Conjugation:	Unconjugated
Storage:	Store the antibody undiluted at 2-8°C for one month or (in aliquots) at -20°C for longer. Avoid repeated freezing and thawing.
Stability:	Shelf life: one year from despatch.
Gene Name:	guanylate cyclase 1, soluble, alpha 2
Database Link:	Entrez Gene 2977 Human P33402
Background:	Soluble guanylate cyclase (sGC), a heterodimeric protein consisting of an alpha and a beta subunit, catalyzes the conversion of GTP to the second messenger cGMP and functions as the main receptor for nitric oxide and nitrovasodilator drugs.

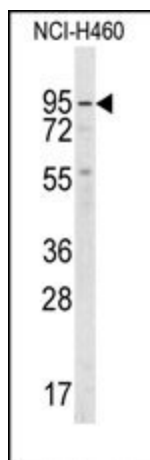


[View online »](#)

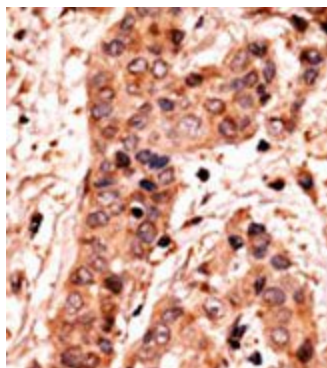
Synonyms: Guanylate cyclase soluble subunit alpha-2, GUC1A2, GUCSA2

Note: **Calculated MW:** 81750 Da

Product images:



Western blot analysis of anti-GUCY1A2 Antibody (C-term) in NCI-H460 cell line lysates (35ug/lane). GUCY1A2 (arrow) was detected using the purified Pab.



Formalin-fixed and paraffin-embedded human cancer tissue reacted with the primary antibody, which was peroxidase-conjugated to the secondary antibody, followed by AEC staining.