

## Product datasheet for **AP15185PU-N**

### **GUCY1B1 (C-term) Rabbit Polyclonal Antibody**

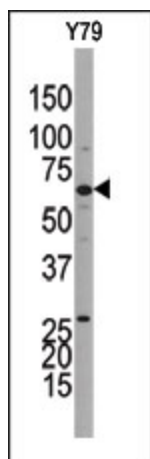
#### **Product data:**

<b>Product Type:</b>	Primary Antibodies
<b>Applications:</b>	WB
<b>Recommended Dilution:</b>	ELISA: 1/1,000. Western blotting: 1/100 - 1/500.
<b>Reactivity:</b>	Human
<b>Host:</b>	Rabbit
<b>Isotype:</b>	Ig
<b>Clonality:</b>	Polyclonal
<b>Immunogen:</b>	This antibody is generated from rabbits immunized with a KLH conjugated synthetic peptide selected from the C-terminal region of human GUCY1B3.
<b>Specificity:</b>	This antibody reacts to GUCY1B3.
<b>Formulation:</b>	PBS with 0.09% (W/V) sodium azide State: Purified State: Liquid purified Ig
<b>Concentration:</b>	lot specific
<b>Purification:</b>	Protein G column, eluted with high and low pH buffers and neutralized immediately, followed by dialysis against PBS
<b>Conjugation:</b>	Unconjugated
<b>Storage:</b>	Store the antibody undiluted at 2-8°C for one month or (in aliquots) at -20°C for longer. Avoid repeated freezing and thawing.
<b>Stability:</b>	Shelf life: one year from despatch.
<b>Gene Name:</b>	guanylate cyclase 1, soluble, beta 3
<b>Database Link:</b>	<a href="#">Entrez Gene 2983 Human Q02153</a>
<b>Background:</b>	Soluble guanylate cyclase (sGC), a heterodimeric protein consisting of an alpha and a beta subunit, catalyzes the conversion of GTP to the second messenger cGMP and functions as the main receptor for nitric oxide and nitrovasodilator drugs.
<b>Synonyms:</b>	GCS-beta-1, GCS-beta-3, GUC1B3, GUCSB3, GUCY1B1, sGC beta



[View online »](#)

## Product images:



Western blot analysis of anti-GUCY1B3 Pab in Y79 cell line lysate. GUCY1B3 (arrow) was detected using the purified Pab