

## Product datasheet for **AP15178PU-N**

### **BRSK1 (N-term) Rabbit Polyclonal Antibody**

#### **Product data:**

<b>Product Type:</b>	Primary Antibodies
<b>Applications:</b>	WB
<b>Recommended Dilution:</b>	ELISA: 1/1,000. Western blotting: 1/100 - 1/500.
<b>Reactivity:</b>	Human
<b>Host:</b>	Rabbit
<b>Isotype:</b>	Ig
<b>Clonality:</b>	Polyclonal
<b>Immunogen:</b>	This antibody is generated from rabbits immunized with a KLH conjugated synthetic peptide selected from the N-terminal region of human BRSK1.
<b>Specificity:</b>	This antibody reacts to BRSK1.
<b>Formulation:</b>	PBS with 0.09% (W/V) sodium azide State: Purified State: Liquid purified Ig
<b>Concentration:</b>	lot specific
<b>Purification:</b>	Protein G column, eluted with high and low pH buffers and neutralized immediately, followed by dialysis against PBS
<b>Conjugation:</b>	Unconjugated
<b>Storage:</b>	Store the antibody undiluted at 2-8°C for one month or (in aliquots) at -20°C for longer. Avoid repeated freezing and thawing.
<b>Stability:</b>	Shelf life: one year from despatch.
<b>Gene Name:</b>	BR serine/threonine kinase 1
<b>Database Link:</b>	<a href="#">Entrez Gene 84446 Human Q8TDC3</a>



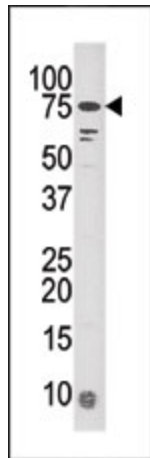
[View online »](#)

**Background:**

BRSK1 may be involved as a checkpoint kinase in the regulation of G2/M arrest in response to UV- or methyl methane sulfonate (MMS)-induced, but not IR-induced, DNA damage. This protein phosphorylates WEE1 and CDC25B in vitro and CDC25C in vitro and in vivo. BRSK1 is partitioned between cytoplasmic and nuclear locations in the absence of DNA damage, but translocates to the nucleus in response to UV- or MMS-induced DNA damage. BRSK1 shares significant homology with the fission yeast Cdr2, a mitosis-regulatory kinase, and *Caenorhabditis elegans* SAD1, a neuronal cell polarity regulator. The BRSK1 transcript is expressed ubiquitously with the highest levels of expression in brain and testis.

**Synonyms:**

KIAA1811, SAD1, SAD-B

**Product images:**

Western blot analysis of anti-KIAA181 Pab in mouse liver tissue lysate (35ug/lane). KIAA181 (arrow) was detected using the purified Pab (1:60 dilution).