

Product datasheet for **AP15164PU-N**

uPA (PLAU) (N-term) Rabbit Polyclonal Antibody

Product data:

Product Type:	Primary Antibodies
Applications:	IHC, WB
Recommended Dilution:	ELISA: 1/1,000. Western blotting: 1/100-1/500. Immunohistochemistry: 1/50-1/100.
Reactivity:	Human, Mouse
Host:	Rabbit
Isotype:	Ig
Clonality:	Polyclonal
Immunogen:	This antibody is generated from rabbits immunized with a KLH conjugated synthetic peptide between aa 68-98 from the N-terminal region of human PLAU.
Specificity:	This antibody recognizes Urokinase/PLAU (N-term).
Formulation:	PBS with 0.09% (W/V) Sodium Azide as preservative. State: Purified State: Liquid purified Ig fraction.
Concentration:	lot specific
Purification:	Protein G Chromatography, eluted with high and low pH buffers and neutralized immediately, followed by dialysis against PBS
Conjugation:	Unconjugated
Storage:	Store the antibody undiluted at 2-8°C for one month or (in aliquots) at -20°C for longer. Avoid repeated freezing and thawing.
Stability:	Shelf life: one year from despatch.
Gene Name:	plasminogen activator, urokinase
Database Link:	Entrez Gene 5328 Human P00749



[View online »](#)

Background:

PLAU, a member of the peptidase family S1, is a potent plasminogen activator and is clinically used for therapy of thrombolytic disorders. PLAU specifically cleaves the Arg-|-Val bond in plasminogen to form plasmin. The protein is found in high and low molecular mass forms. Each consists of two chains, A and B. The high molecular mass form contains a long chain A. Cleavage occurs after residue 155 in the low molecular mass form to yield a short A1 chain. The protein is used in Pulmonary Embolism (PE) to initiate fibrinolysis. Structurally, PLAU contains 1 EGF-like domain and 1 kringle domain.

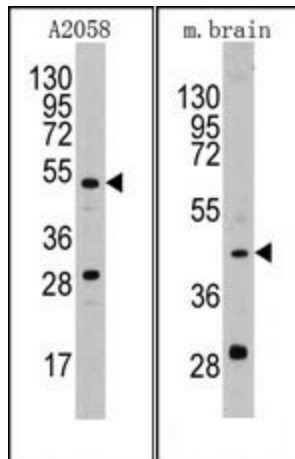
Synonyms:

Urokinase-type plasminogen activator, U-plasminogen activator, Urokinase

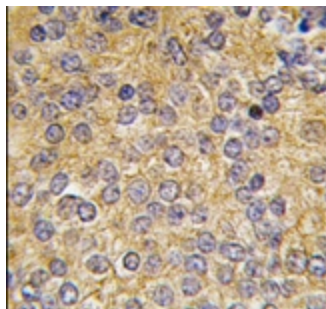
Note:

Calculated MW: 48525 Da

Product images:



(LEFT)Western blot analysis of anti-PLAU Antibody (N-term) in A2058 cell line lysates (35ug/lane). PLAU (arrow) was detected using the purified Pab. (RIGHT)Western blot analysis of anti-PLAU Antibody (N-term) in mouse brain tissue lysates (35ug/lane). PLAU (arrow) was detected using the purified Pab



Formalin-fixed and paraffin-embedded human prostata carcinoma tissue reacted with PLAU antibody (N-term), which was peroxidase-conjugated to the secondary antibody, followed by DAB staining.