

Product datasheet for **AP15159PU-N**

CIB2 (N-term) Rabbit Polyclonal Antibody

Product data:

Product Type:	Primary Antibodies
Applications:	IHC, WB
Recommended Dilution:	ELISA: 1/1,000. Western blotting: 1/100 - 1/500. Immunohistochemistry: 1/50 - 1/100.
Reactivity:	Human
Host:	Rabbit
Isotype:	Ig
Clonality:	Polyclonal
Immunogen:	This antibody is generated from rabbits immunized with a KLH conjugated synthetic peptide selected from the N-terminal region of human KIP2.
Specificity:	This antibody reacts to KIP2.
Formulation:	PBS with 0.09% (W/V) sodium azide State: Purified State: Liquid purified Ig
Concentration:	lot specific
Purification:	Protein G column, eluted with high and low pH buffers and neutralized immediately, followed by dialysis against PBS
Conjugation:	Unconjugated
Storage:	Store the antibody undiluted at 2-8°C for one month or (in aliquots) at -20°C for longer. Avoid repeated freezing and thawing.
Stability:	Shelf life: one year from despatch.
Gene Name:	calcium and integrin binding family member 2
Database Link:	Entrez Gene 10518 Human O75838



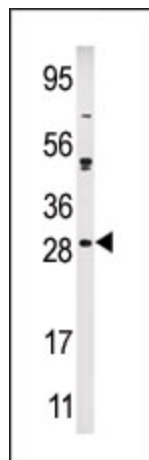
[View online »](#)

Background:

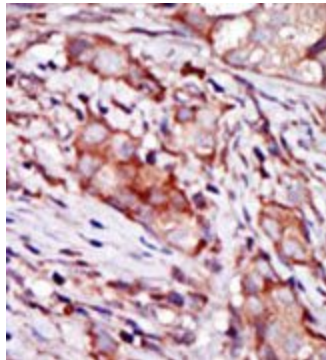
DNA-dependent protein kinases (DNA-PK) play a role in the repair of double-strand DNA breaks and in the process of V(D)J recombination during lymphoid development. By EST database searching for sequences homologous to the DNA-PK gene KIP/CIB and 5-prime RACE, Seki, N et al. isolated a full-length cDNA, which they designated as KIP2, from a human fetal brain cDNA library. KIP2 encodes a deduced 187-amino acid protein with a predicted molecular mass of 22 kD. The KIP2 protein shares 46%, 39%, and 30% sequence identity with the calcium-binding proteins KIP/CIB, calcineurin B and calmodulin respectively. KIP2 contains two EF-hand motifs and a helix-loop-helix motif involved in coordinating the calcium ion, indicating that KIP2 may also bind calcium. KIP2 is ubiquitously expressed in various human tissues.

Synonyms:

CIB2, KIP2, Calcium and integrin-binding family member 2, Kinase-interacting protein 2, KIP 2

Product images:

Western blot analysis of anti-KIP2 Pab in Ramos cell line lysate (35ug/lane). KIP2 (arrow) was detected using the purified Pab (1:60 dilution)



Formalin-fixed and paraffin-embedded human cancer tissue reacted with the primary antibody, which was peroxidase-conjugated to the secondary antibody, followed by AEC staining.