

Product datasheet for **AP15154PU-N**

PFKFB4 Rabbit Polyclonal Antibody

Product data:

| | |
|-----------------------|--|
| Product Type: | Primary Antibodies |
| Applications: | IHC, WB |
| Recommended Dilution: | ELISA: 1/1,000. Western Blot: 1/100 - 1/500. Immunohistochemistry on Paraffin Sections: 1/50-1/100. |
| Reactivity: | Human, Mouse |
| Host: | Rabbit |
| Isotype: | Ig |
| Clonality: | Polyclonal |
| Immunogen: | KLH conjugated synthetic peptide between 274~303 amino acids from the center region of Human PFKFB4. |
| Specificity: | This antibody recognizes Human and Mouse PFKFB4. |
| Formulation: | PBS State: Purified State: Liquid purified Ig fraction Preservative: 0.09% Sodium Azide |
| Concentration: | lot specific |
| Purification: | Protein G Chromatography, eluted with high and low pH buffers and neutralized immediately, followed by dialysis against PBS |
| Conjugation: | Unconjugated |
| Storage: | Store undiluted at 2-8°C for one month or (in aliquots) at -20°C for longer. Avoid repeated freezing and thawing. |
| Stability: | Shelf life: one year from despatch. |
| Gene Name: | 6-phosphofructo-2-kinase/fructose-2,6-biphosphatase 4 |
| Database Link: | Entrez Gene 5210 Human Q16877 |



[View online »](#)

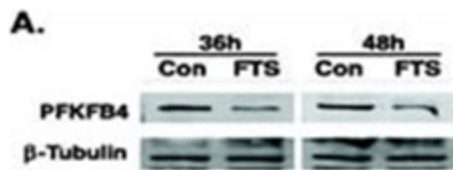
Background:

Protein kinases are enzymes that transfer a phosphate group from a phosphate donor, generally the γ phosphate of ATP, onto an acceptor amino acid in a substrate protein. By this basic mechanism, protein kinases mediate most of the signal transduction in eukaryotic cells, regulating cellular metabolism, transcription, cell cycle progression, cytoskeletal rearrangement and cell movement, apoptosis, and differentiation. With more than 500 gene products, the protein kinase family is one of the largest families of proteins in eukaryotes. The family has been classified in 8 major groups based on sequence comparison of their tyrosine (PTK) or serine/threonine (STK) kinase catalytic domains. The AGC kinase group consists of 63 kinases including the cyclic nucleotide-regulated protein kinase (PKA & PKG) family, the diacylglycerol-activated/phospholipid-dependent protein kinase C (PKC) family, the related to PKA and PKC (RAC/Akt) protein kinase family, the kinases that phosphorylate G protein-coupled receptors family (ARK), and the kinases that phosphorylate ribosomal protein S6 family (RSK).

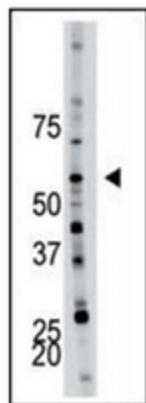
Synonyms:

6-phosphofructo-2-kinase, 6PF-2-K, PFK/FBPase 4

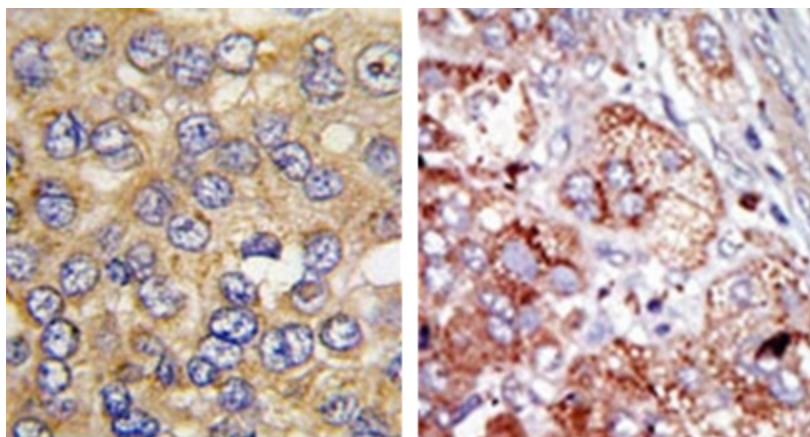
Product images:



FTS down-regulates HIF-1 and HIF-1-regulated proteins in GBM cells. GBM cell lines were incubated under hypoxia (1% O₂) for the indicated periods with FTS and then processed for the determination of PFKFB4 by Western Blot. Samples of total cell lysates were also immunoblotted with anti-Beta-Tubulin antibody.



Western blot analysis using PFKFB4 Antibody to detect PFKFB4 in mouse brain tissue lysate.



Left: Formalin-fixed, paraffin-embedded human hepatocarcinoma tissue reacted with PFKFB4 Antibody, which was peroxidase-conjugated to the secondary antibody, followed by DAB staining. Right: Formalin-fixed, paraffin-embedded human cancer tissue reacted with PFKFB4 Antibody, which was peroxidase-conjugated to the secondary antibody, followed by AEC staining.