

Product datasheet for **AP15151PU-N**

14-3-3 zeta (YWHAZ) Rabbit Polyclonal Antibody

Product data:

Product Type:	Primary Antibodies
Applications:	IHC, WB
Recommended Dilution:	ELISA: 1/1,000. Western blotting: 1/50 - 1/100. Immunohistochemistry: 1/10 - 1/50.
Reactivity:	Human
Host:	Rabbit
Isotype:	Ig
Clonality:	Polyclonal
Immunogen:	This antibody is generated from rabbits immunized with a KLH conjugated synthetic peptide corresponding to amino acid residues surrounding T232 of human 14-3-3.
Specificity:	This antibody reacts to 14-3-3 protein zeta/delta.
Formulation:	PBS with 0.09% (W/V) sodium azide State: Aff - Purified State: Liquid purified Ig
Concentration:	lot specific
Purification:	Protein A column, followed by peptide affinity purification
Conjugation:	Unconjugated
Storage:	Store the antibody undiluted at 2-8°C for one month or (in aliquots) at -20°C for longer. Avoid repeated freezing and thawing.
Stability:	Shelf life: one year from despatch.
Gene Name:	tyrosine 3-monooxygenase/tryptophan 5-monooxygenase activation protein zeta
Database Link:	Entrez Gene 7534 Human P63104

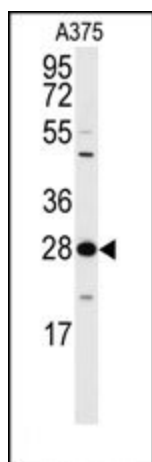


[View online »](#)

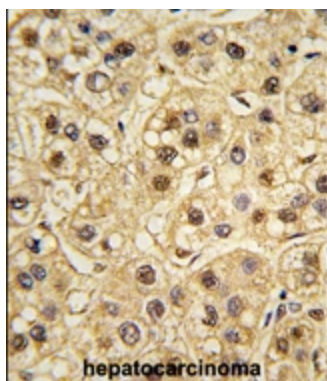
Background: 14-3-3 protein zeta/delta belongs to the 14-3-3 family of proteins which mediate signal transduction by binding to phosphoserine-containing proteins. This protein interacts with IRS1 protein, suggesting a role in regulating insulin sensitivity. This highly conserved protein family is found in both plants and mammals, and this protein is 99% identical to the mouse, rat and sheep orthologs.

Synonyms: YWHAZ, KCIP-1

Product images:



Western blot analysis of anti-14-3-3 protein zeta/delta antibody (T232) in A375 cell line lysates (35ug/lane). 14-3-3 (arrow) was detected using the purified Pab (1:60dilution).



Formalin-fixed and paraffin-embedded human testis tissue reacted with PLD1 antibody (N-term) which was peroxidase-conjugated to the secondary antibody, followed by DAB staining.