

Product datasheet for **AP15128PU-N**

Hexokinase 1 (HK1) (N-term) Rabbit Polyclonal Antibody

Product data:

Product Type:	Primary Antibodies
Applications:	IHC, WB
Recommended Dilution:	ELISA: 1/1,000. Western blotting: 1/100 - 1/500. Immunohistochemistry: 1/50 - 1/100.
Reactivity:	Human, Mouse
Host:	Rabbit
Isotype:	Ig
Clonality:	Polyclonal
Immunogen:	This antibody is generated from rabbits immunized with a KLH conjugated synthetic peptide selected from the N-terminal region of human HK1.
Specificity:	This antibody reacts to HK1.
Formulation:	PBS with 0.09% (W/V) sodium azide State: Purified State: Liquid purified Ig
Concentration:	lot specific
Purification:	Protein G column, eluted with high and low pH buffers and neutralized immediately, followed by dialysis against PBS
Conjugation:	Unconjugated
Storage:	Store the antibody undiluted at 2-8°C for one month or (in aliquots) at -20°C for longer. Avoid repeated freezing and thawing.
Stability:	Shelf life: one year from despatch.
Gene Name:	hexokinase 1
Database Link:	Entrez Gene 3098 Human P19367

[View online »](#)

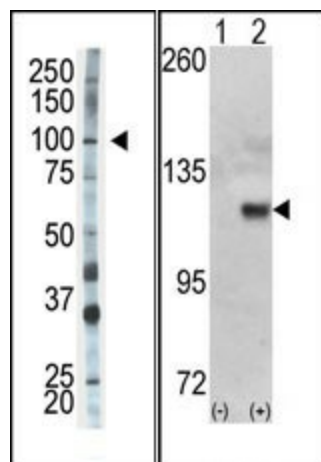
Background:

Hexokinases phosphorylate glucose to produce glucose-6-phosphate, thus committing glucose to the glycolytic pathway. The hexokinase gene encodes a ubiquitous form of hexokinase which localizes to the outer membrane of mitochondria. Mutations in this gene have been associated with hemolytic anemia due to hexokinase deficiency. Alternative splicing of the hexokinase gene results in five transcript variants which encode different isoforms, some of which are tissue-specific. Each isoform has a distinct N-terminus; the remainder of the protein is identical among all the isoforms. HK1 encodes the ubiquitously expressed isoform. Its 5' end includes an exon which is unique to this transcript and which encodes a distinct N-terminus that contains the porin binding domain (PBD). The porin binding domain mediates association with the mitochondrial membrane.

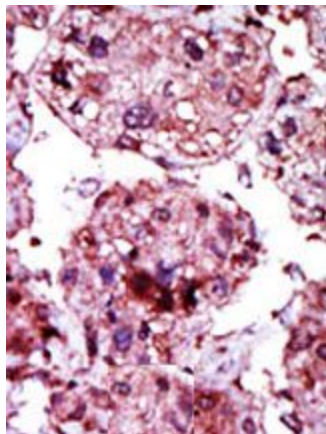
Synonyms:

HK1, Hexokinase type I, Brain form hexokinase

Product images:



(LEFT)The anti-HK1 Pab is used in Western blot to detect HK1 in mouse skeletal muscle tissue lysate. (RIGHT)Western blot analysis of HK1 (arrow) using HK1 Antibody (N-term). 293 cell lysates (2 ug/lane) either nontransfected (Lane 1) or transiently transfected with the HK1 gene (Lane 2) (Origene Technologies).



Formalin-fixed and paraffin-embedded human cancer tissue reacted with the primary antibody, which was peroxidase-conjugated to the secondary antibody, followed by AEC staining.