

## Product datasheet for **AP15119PU-N**

### **IKBKE (C-term) Rabbit Polyclonal Antibody**

#### **Product data:**

<b>Product Type:</b>	Primary Antibodies
<b>Applications:</b>	IHC, WB
<b>Recommended Dilution:</b>	ELISA: 1/1,000. Western blotting: 1/100 - 1/500. Immunohistochemistry: 1/50 - 1/100.
<b>Reactivity:</b>	Human
<b>Host:</b>	Rabbit
<b>Isotype:</b>	Ig
<b>Clonality:</b>	Polyclonal
<b>Immunogen:</b>	This antibody is generated from rabbits immunized with a KLH conjugated synthetic peptide selected from the C-terminal region of human IKKE.
<b>Specificity:</b>	This antibody reacts to IKKE.
<b>Formulation:</b>	PBS with 0.09% (W/V) sodium azide State: Purified State: Liquid purified Ig
<b>Concentration:</b>	lot specific
<b>Purification:</b>	Protein G column, eluted with high and low pH buffers and neutralized immediately, followed by dialysis against PBS
<b>Conjugation:</b>	Unconjugated
<b>Storage:</b>	Store the antibody undiluted at 2-8°C for one month or (in aliquots) at -20°C for longer. Avoid repeated freezing and thawing.
<b>Stability:</b>	Shelf life: one year from despatch.
<b>Gene Name:</b>	inhibitor of kappa light polypeptide gene enhancer in B-cells, kinase epsilon
<b>Database Link:</b>	<a href="#">Entrez Gene 9641 Human Q14164</a>



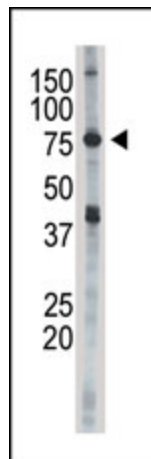
[View online »](#)

**Background:**

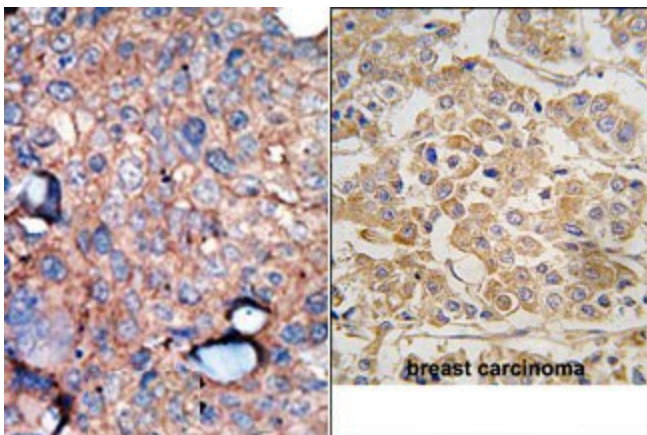
Protein kinases are enzymes that transfer a phosphate group from a phosphate donor, generally the  $\gamma$  phosphate of ATP, onto an acceptor amino acid in a substrate protein. By this basic mechanism, protein kinases mediate most of the signal transduction in eukaryotic cells, regulating cellular metabolism, transcription, cell cycle progression, cytoskeletal rearrangement and cell movement, apoptosis, and differentiation. With more than 500 gene products, the protein kinase family is one of the largest families of proteins in eukaryotes. The family has been classified in 8 major groups based on sequence comparison of their tyrosine (PTK) or serine/threonine (STK) kinase catalytic domains. The AGC kinase group consists of 63 kinases including the cyclic nucleotide-regulated protein kinase (PKA & PKG) family, the diacylglycerol-activated/phospholipid-dependent protein kinase C (PKC) family, the related to PKA and PKC (RAC/Akt) protein kinase family, the kinases that phosphorylate G protein-coupled receptors family (ARK), and the kinases that phosphorylate ribosomal protein S6 family (RSK).

**Synonyms:**

I kappa-B kinase epsilon, IKK-epsilon, IKK-E, IKKI, KIAA0151, Inducible I kappa-B kinase, IKK-I

**Product images:**

The anti-IKKE Pab is used in Western blot to detect IKKE in 293 cell lysate.



(LEFT) Formalin-fixed and paraffin-embedded human cancer tissue reacted with the primary antibody, which was peroxidase-conjugated to the secondary antibody, followed by AEC staining. (RIGHT) Formalin-fixed and paraffin-embedded human breast carcinoma tissue reacted with IKKE Antibody (C-term) which was peroxidase-conjugated to the secondary antibody, followed by DAB staining.