

## Product datasheet for **AP15064PU-N**

### WEE1 (Center) Rabbit Polyclonal Antibody

#### Product data:

|                       |  |
|-----------------------|--|
| Product Type:         | Primary Antibodies   |
| Applications:         | IHC, WB  |
| Recommended Dilution: | ELISA: 1/1,000.<br>Western blotting: 1/100 - 1/500.<br>Immunohistochemistry: 1/50 - 1/100.   |
| Reactivity:           | Human, Mouse   |
| Host:                 | Rabbit   |
| Isotype:              | Ig   |
| Clonality:            | Polyclonal   |
| Immunogen:            | This antibody is generated from rabbits immunized with a KLH conjugated synthetic peptide selected from the center region of human WEE1. |
| Specificity:          | This antibody reacts to WEE1.  |
| Formulation:          | PBS with 0.09% (W/V) sodium azide<br>State: Purified<br>State: Liquid purified Ig  |
| Concentration:        | lot specific   |
| Purification:         | Protein G column, eluted with high and low pH buffers and neutralized immediately, followed by dialysis against PBS                      |
| Conjugation:          | Unconjugated   |
| Storage:              | Store the antibody undiluted at 2-8°C for one month or (in aliquots) at -20°C for longer.<br>Avoid repeated freezing and thawing.        |
| Stability:            | Shelf life: one year from despatch.  |
| Gene Name:            | WEE1 G2 checkpoint kinase  |
| Database Link:        | <a href="#">Entrez Gene 7465 Human P30291</a>  |



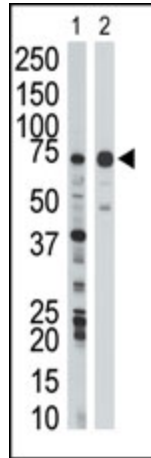
[View online »](#)

**Background:**

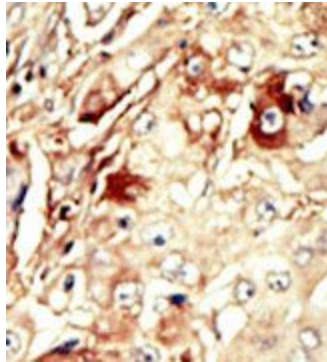
WEE1 is a nuclear protein, which is a tyrosine kinase belonging to the Ser/Thr family of protein kinases. This protein catalyzes the inhibitory tyrosine phosphorylation of CDC2/cyclin B kinase, and appears to coordinate the transition between DNA replication and mitosis by protecting the nucleus from cytoplasmically activated CDC2 kinase.

**Synonyms:**

Wee1A kinase, WEE1hu

**Product images:**

The anti-WEE1 Pab is used in Western blot to detect WEE1 in Jurkat cell lysate (Lane 1) and mouse liver tissue lysate (Lane 2).



Formalin-fixed and paraffin-embedded human cancer tissue reacted with the primary antibody, which was peroxidase-conjugated to the secondary antibody, followed by AEC staining.