

Product datasheet for **AP15061PU-N**

TLK2 (Center) Rabbit Polyclonal Antibody

Product data:

Product Type:	Primary Antibodies
Applications:	WB
Recommended Dilution:	ELISA: 1/1,000. Western blotting: 1/100 - 1/500. Flow cytometry.
Reactivity:	Human
Host:	Rabbit
Isotype:	Ig
Clonality:	Polyclonal
Immunogen:	This antibody is generated from rabbits immunized with a KLH conjugated synthetic peptide selected from the center region of human TLK2.
Specificity:	This antibody reacts to TLK2.
Formulation:	PBS with 0.09% (W/V) sodium azide State: Purified State: Liquid purified Ig
Concentration:	lot specific
Purification:	Protein G column, eluted with high and low pH buffers and neutralized immediately, followed by dialysis against PBS
Conjugation:	Unconjugated
Storage:	Store the antibody undiluted at 2-8°C for one month or (in aliquots) at -20°C for longer. Avoid repeated freezing and thawing.
Stability:	Shelf life: one year from despatch.
Gene Name:	tousled like kinase 2
Database Link:	Entrez Gene 11011 Human Q86UE8



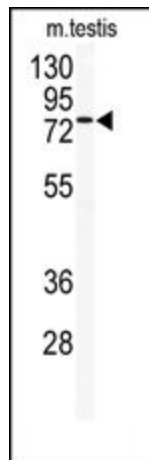
[View online »](#)

Background:

TLK2, a member of the Ser/Thr protein kinase family, is rapidly and transiently inhibited by phosphorylation following the generation of DNA double-stranded breaks during S-phase. This is cell cycle checkpoint and ATM-pathway dependent and appears to regulate processes involved in chromatin assembly. The TLK2 enzyme is cell-cycle regulated, with maximal activity in S-phase. It is inactivated by phosphorylation at Ser-750, potentially by CHK1. TLK2 heterodimerizes with TLK1. This nuclear protein is widely expressed, with presence in fetal placenta, liver, kidney, pancreas, heart and skeletal muscle tissues, and in several adult cell lines.

Synonyms:

Tousled-like kinase 2

Product images:

Western blot analysis of anti-TLK2 Antibody (Center) in mouse testis tissue lysates (35ug/lane). TLK2 (arrow) was detected using the purified Pab.