

Product datasheet for **AP15049PU-N**

PCK1 (N-term) Rabbit Polyclonal Antibody

Product data:

Product Type:	Primary Antibodies
Applications:	IHC, WB
Recommended Dilution:	ELISA: 1/1,000. Western blotting: 1/1,000. Immunohistochemistry: 1/50-1/100.
Reactivity:	Human, Mouse
Host:	Rabbit
Isotype:	Ig
Clonality:	Polyclonal
Immunogen:	KLH conjugated synthetic peptide between 40-70 amino acids from the N-terminal region of Human PCK1.
Specificity:	This antibody recognizes PCK1.
Formulation:	PBS with 0.09% (W/V) Sodium Azide State: Purified State: Liquid purified IgG fraction
Concentration:	lot specific
Purification:	Saturated Ammonium Sulfate (SAS) precipitation followed by dialysis against PBS
Conjugation:	Unconjugated
Storage:	Store undiluted at 2-8°C for one month or (in aliquots) at -20°C for longer. Avoid repeated freezing and thawing.
Stability:	Shelf life: one year from despatch.
Gene Name:	phosphoenolpyruvate carboxykinase 1
Database Link:	Entrez Gene 5105 Human P35558



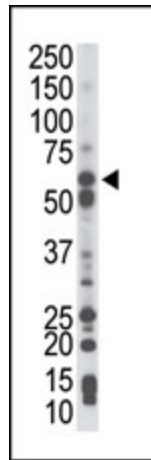
[View online »](#)

Background:

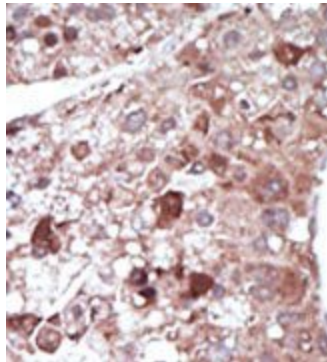
This gene is a main control point for the regulation of gluconeogenesis. The cytosolic enzyme encoded by this gene, along with GTP, catalyzes the formation of phosphoenolpyruvate from oxaloacetate, with the release of carbon dioxide and GDP. The expression of this gene can be regulated by insulin, glucocorticoids, glucagon, cAMP, and diet. A mitochondrial isozyme of the encoded protein also has been characterized.

Synonyms:

PEPCK-C, PEPCKC, Phosphoenolpyruvate carboxylase, PEP carboxykinase

Product images:

The anti-PCK1 Pab is used in Western blot to detect PCK1 in mouse liver tissue lysate.



Formalin-fixed and paraffin-embedded human cancer tissue reacted with the primary antibody, which was peroxidase-conjugated to the secondary antibody, followed by DAB staining.