

Product datasheet for **AP15031PU-N**

NME6 (N-term) Rabbit Polyclonal Antibody

Product data:

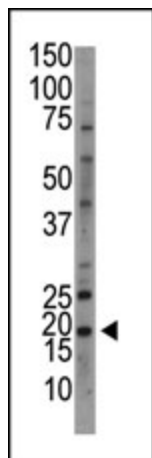
Product Type:	Primary Antibodies
Applications:	WB
Recommended Dilution:	ELISA: 1/1,000. Western blotting: 1/100 - 1/500. Flow cytometry.
Reactivity:	Human
Host:	Rabbit
Isotype:	Ig
Clonality:	Polyclonal
Immunogen:	This antibody is generated from rabbits immunized with a KLH conjugated synthetic peptide selected from the N-terminal region of human NME6.
Specificity:	This antibody reacts to NME6.
Formulation:	PBS with 0.09% (W/V) sodium azide State: Purified State: Liquid purified Ig
Concentration:	lot specific
Purification:	Protein G column, eluted with high and low pH buffers and neutralized immediately, followed by dialysis against PBS
Conjugation:	Unconjugated
Storage:	Store the antibody undiluted at 2-8°C for one month or (in aliquots) at -20°C for longer. Avoid repeated freezing and thawing.
Stability:	Shelf life: one year from despatch.
Gene Name:	NME/NM23 nucleoside diphosphate kinase 6
Database Link:	Entrez Gene 10201 Human O75414
Background:	NME6 plays a major role in the synthesis of nucleoside triphosphates other than ATP. It is an inhibitor of p53-induced apoptosis. NME6 is expressed at a moderately low level in many tissues, most abundantly in kidney, prostate, ovary, intestine, and spleen.



[View online »](#)

Synonyms: NDK 6, NDP kinase 6

Product images:



Western blot analysis of anti-NME6 Pab in HL-60 cell lysate. NME6 (arrow) was detected using purified Pab. Secondary HRP-anti-rabbit was used for signal visualization with chemiluminescence.