

Product datasheet for **AP15026PU-N**

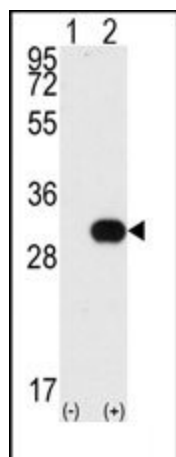
NEK7 (N-term) Rabbit Polyclonal Antibody

Product data:

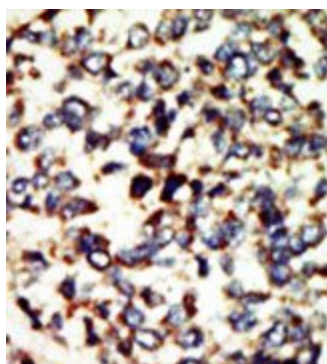
Product Type:	Primary Antibodies
Applications:	IHC, WB
Recommended Dilution:	ELISA: 1/1,000. Western Blot: 1/100 - 1/500. Immunohistochemistry: 1/50 - 1/100.
Reactivity:	Human
Host:	Rabbit
Isotype:	Ig
Clonality:	Polyclonal
Immunogen:	This antibody is generated from rabbits immunized with a KLH conjugated synthetic peptide selected from the N-terminal region of human NEK7.
Specificity:	This antibody reacts to NEK7.
Formulation:	PBS with 0.09% (W/V) sodium azide State: Purified State: Liquid purified Ig
Concentration:	lot specific
Purification:	Protein G column, eluted with high and low pH buffers and neutralized immediately, followed by dialysis against PBS
Conjugation:	Unconjugated
Storage:	Store the antibody undiluted at 2-8°C for one month or (in aliquots) at -20°C for longer. Avoid repeated freezing and thawing.
Stability:	Shelf life: one year from despatch.
Gene Name:	NIMA related kinase 7
Database Link:	Entrez Gene 140609 Human Q8TDX7
Background:	NIMA-related kinases share high amino acid sequence identity with the gene product of the Aspergillus nidulans never in mitosis A gene, which controls initiation of mitosis.
Synonyms:	NIMA related kinase 7



[View online »](#)

Product images:

Western blot analysis of NEK7 (arrow) using NEK7 Antibody (N-term). 293 cell lysates (2 ug/lane) either nontransfected (Lane 1) or transiently transfected with the NEK7 gene (Lane 2) (Origene Technologies).



Formalin-fixed and paraffin-embedded human cancer tissue reacted with the primary antibody, which was peroxidase-conjugated to the secondary antibody, followed by DAB staining.