

Product datasheet for **AP15021PU-N**

NEK2 Rabbit Polyclonal Antibody

Product data:

Product Type:	Primary Antibodies
Applications:	WB
Recommended Dilution:	ELISA: 1/1,000. Western blotting: 1/100 - 1/500.
Reactivity:	Human
Host:	Rabbit
Isotype:	Ig
Clonality:	Polyclonal
Immunogen:	This antibody is generated from rabbits immunized with a KLH conjugated synthetic peptide selected from the center region of human NEK2.
Specificity:	This antibody reacts to NEK2.
Formulation:	PBS with 0.09% (W/V) sodium azide State: Purified State: Liquid purified Ig
Concentration:	lot specific
Purification:	Protein G column, eluted with high and low pH buffers and neutralized immediately, followed by dialysis against PBS
Conjugation:	Unconjugated
Storage:	Store the antibody undiluted at 2-8°C for one month or (in aliquots) at -20°C for longer. Avoid repeated freezing and thawing.
Stability:	Shelf life: one year from despatch.
Gene Name:	NIMA related kinase 2
Database Link:	Entrez Gene 4751 Human P51955



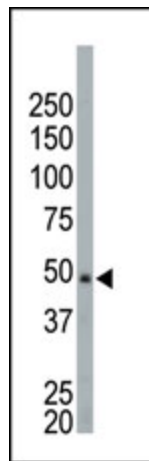
[View online »](#)

Background:

NEK2 is closely related in its catalytic domain to the serine/threonine protein kinase NIMA of *Aspergillus nidulans* which is required for entry into mitosis and may function in parallel to the universal mitotic inducer p34cdc2. Like NIMA, the Nek2 protein is almost undetectable during G1 but accumulates progressively throughout S, reaching maximal levels in late G2. These observations demonstrate that NEK2 resembles *Aspergillus* NIMA, both in its catalytic domain, and cell cycle-dependent expression. Recombinant NEK2 is active as a serine/threonine-specific protein kinase and may undergo autophosphorylation. Both human NEK2 and fungal NIMA phosphorylate a similar, but not identical, set of proteins and synthetic peptides. NEK2 is shown to be expressed most abundantly in adult testis and there is increasing evidence that NEK2 is abnormally expressed in a wide variety of human cancers. This antibody is specific to isoform 2 of NEK2.

Synonyms:

NLK1, NimA-related protein kinase 2, HSPK 21

Product images:

The anti-NEK2 Pab is used in Western blot to detect NEK2 in HeLa cell lysate.