

Product datasheet for **AP15018PU-N**

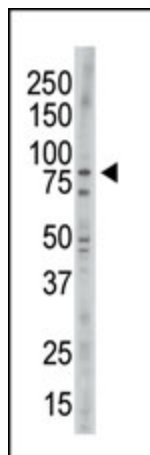
NEK11 (C-term) Rabbit Polyclonal Antibody

Product data:

Product Type:	Primary Antibodies
Applications:	WB
Recommended Dilution:	ELISA: 1/1,000. Western blotting: 1/100 - 1/500. Flow cytometry.
Reactivity:	Human, Mouse
Host:	Rabbit
Isotype:	Ig
Clonality:	Polyclonal
Immunogen:	This antibody is generated from rabbits immunized with a KLH conjugated synthetic peptide selected from the C-terminal region of human NEK11L.
Specificity:	This antibody reacts to NEK11L.
Formulation:	PBS with 0.09% (W/V) sodium azide State: Purified State: Liquid purified Ig
Concentration:	lot specific
Purification:	Protein G column, eluted with high and low pH buffers and neutralized immediately, followed by dialysis against PBS
Conjugation:	Unconjugated
Storage:	Store the antibody undiluted at 2-8°C for one month or (in aliquots) at -20°C for longer. Avoid repeated freezing and thawing.
Stability:	Shelf life: one year from despatch.
Gene Name:	NIMA related kinase 11
Database Link:	Entrez Gene 79858 Human Q8NG66
Background:	NEK11 belongs to the NIMA family of kinases, which are involved in DNA replication and genotoxic stress responses.
Synonyms:	NIMA - related kinase 11



[View online »](#)

Product images:

Western blot analysis of anti-NEK11L Pab in mouse brain tissue lysate. NEK11L (arrow) was detected using purified Pab. Secondary HRP-anti-rabbit was used for signal visualization with chemiluminescence.