

Product datasheet for **AP15013PU-N**

KIST (UHMK1) (N-term) Rabbit Polyclonal Antibody

Product data:

Product Type:	Primary Antibodies
Applications:	IHC, WB
Recommended Dilution:	ELISA: 1/1,000. Western blotting: 1/100 - 1/500. Immunohistochemistry: 1/50 - 1/100.
Reactivity:	Human, Mouse
Host:	Rabbit
Isotype:	Ig
Clonality:	Polyclonal
Immunogen:	This antibody is generated from rabbits immunized with a KLH conjugated synthetic peptide selected from the N-terminal region of human KIS.
Specificity:	This antibody reacts to KIST (KIS).
Formulation:	PBS with 0.09% (W/V) sodium azide State: Purified State: Liquid purified Ig
Concentration:	lot specific
Purification:	Protein G column, eluted with high and low pH buffers and neutralized immediately, followed by dialysis against PBS
Conjugation:	Unconjugated
Storage:	Store the antibody undiluted at 2-8°C for one month or (in aliquots) at -20°C for longer. Avoid repeated freezing and thawing.
Stability:	Shelf life: one year from despatch.
Gene Name:	U2AF homology motif (UHM) kinase 1
Database Link:	Entrez Gene 127933 Human Q8TAS1



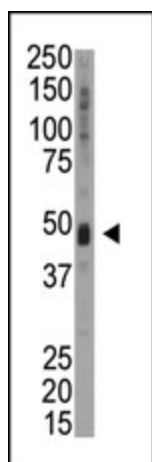
[View online »](#)

Background:

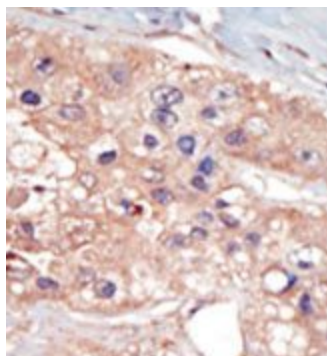
Upon serum stimulation, KIS, a member of the Ser/Thr protein kinase family, phosphorylates CDKN1B/p27Kip1, thus controlling CDKN1B subcellular location and cell cycle progression in G1 phase. This protein, which contains 1 RRM (RNA recognition motif) domain, may be involved in trafficking and/or processing of RNA. KIS is widely expressed, with highest levels in skeletal muscle, kidney, placenta and peripheral blood leukocytes.

Synonyms:

KIS

Product images:

Western blot analysis of anti-KIS Pab in mouse heart tissue lysate. KIS (arrow) was detected using purified Pab. Secondary HRP-anti-rabbit was used for signal visualization with chemiluminescence.



Formalin-fixed and paraffin-embedded human cancer tissue reacted with the primary antibody, which was peroxidase-conjugated to the secondary antibody, followed by DAB staining.