

Product datasheet for **AP14969PU-N**

PIP5K2 beta (PIP4K2B) (C-term) Rabbit Polyclonal Antibody

Product data:

Product Type:	Primary Antibodies
Applications:	IHC, WB
Recommended Dilution:	ELISA: 1/1,000. Western blotting: 1/100-1/500. Immunohistochemistry: 1/50-1/100.
Reactivity:	Human
Host:	Rabbit
Isotype:	Ig
Clonality:	Polyclonal
Immunogen:	This antibody is generated from rabbits immunized with a KLH conjugated synthetic peptide selected from the C-terminal region of human PIP5K2B.
Specificity:	This antibody recognizes PIP5K2B.
Formulation:	PBS with 0.09% (W/V) Sodium Azide as preservative. State: Purified State: Liquid purified Ig fraction.
Concentration:	lot specific
Purification:	Protein G Chromatography, eluted with high and low pH buffers and neutralized immediately, followed by dialysis against PBS.
Conjugation:	Unconjugated
Storage:	Store the antibody undiluted at 2-8°C for one month or (in aliquots) at -20°C for longer. Avoid repeated freezing and thawing.
Stability:	Shelf life: one year from despatch.
Gene Name:	phosphatidylinositol-5-phosphate 4-kinase type 2 beta
Database Link:	Entrez Gene 8396 Human P78356



[View online »](#)

Background: PIP5K2B catalyzes the phosphorylation of phosphatidylinositol-4-phosphate on the fifth hydroxyl of the myo-inositol ring to form phosphatidylinositol-4,5-bisphosphate. It is a member of the phosphatidylinositol-4-phosphate 5-kinase family. The encoded protein sequence does not show similarity to other kinases, but the protein does exhibit kinase activity. Additionally, the encoded protein interacts with p55 TNF receptor.

Synonyms: PIP4KII-beta, Diphosphoinositide kinase 2-beta

Note: **Molecular Weight:** 47319 Da

Product images:

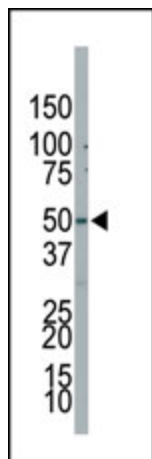


Figure 1. Western blot analysis using anti-PIP5K2B Pab to detect PIP5K2B in NCI-H460 cell lysate.

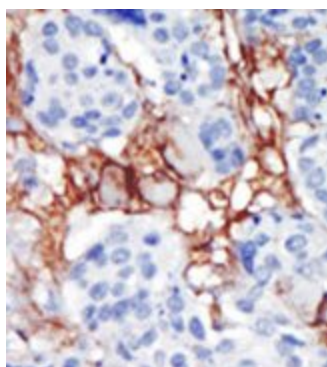


Figure 2. Formalin-fixed and paraffin-embedded human cancer tissue reacted with the primary antibody, which was peroxidase-conjugated to the secondary antibody, followed by AEC staining.