

Product datasheet for **AP14965PU-N**

PIP5KI gamma (PIP5K1C) (C-term) Rabbit Polyclonal Antibody

Product data:

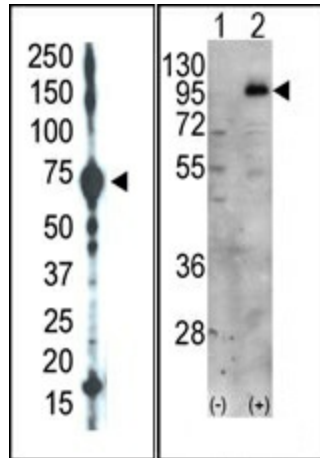
Product Type:	Primary Antibodies
Applications:	IHC, WB
Recommended Dilution:	ELISA: 1/1,000. Western blotting: 1/100 - 1/500. Immunohistochemistry: 1/50 - 1/100.
Reactivity:	Human
Host:	Rabbit
Isotype:	Ig
Clonality:	Polyclonal
Immunogen:	This antibody is generated from rabbits immunized with a KLH conjugated synthetic peptide selected from the C-terminal region of human PIP5K1G.
Specificity:	This antibody reacts to PIP5KI gamma.
Formulation:	PBS with 0.09% (W/V) sodium azide State: Purified State: Liquid purified Ig
Concentration:	lot specific
Purification:	Protein G column, eluted with high and low pH buffers and neutralized immediately, followed by dialysis against PBS
Conjugation:	Unconjugated
Storage:	Store the antibody undiluted at 2-8°C for one month or (in aliquots) at -20°C for longer. Avoid repeated freezing and thawing.
Stability:	Shelf life: one year from despatch.
Gene Name:	phosphatidylinositol-4-phosphate 5-kinase type 1 gamma
Database Link:	Entrez Gene 23396 Human O60331
Background:	PIP5K1G is a member of the type I phosphatidylinositol-4-phosphate 5-kinase family of enzymes. A similar protein in mice is found in synapses and focal adhesion plaques, and binds the FERM domain of talin through its C-terminus.



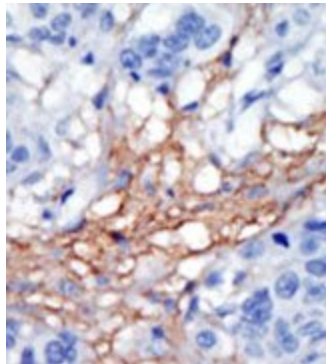
[View online »](#)

Synonyms: PIP5K1-gamma, PIP5K1gamma, PtdIns(4)P-5-kinase 1 gamma, KIAA0589

Product images:



(LEFT) The anti-PIP5K1G Pab is used in Western blot to detect PIP5K1G in HeLa cell lysate. (RIGHT) Western blot analysis of PIP5K1C (arrow) using PIP5K1G Antibody (C-term). 293 cell lysates (2 ug/lane) either nontransfected (Lane 1) or transiently transfected with the PIP5K1C gene (Lane 2) (Origene Technologies).



Formalin-fixed and paraffin-embedded human cancer tissue reacted with the primary antibody, which was peroxidase-conjugated to the secondary antibody, followed by AEC staining.