

Product datasheet for **AP14959PU-N**

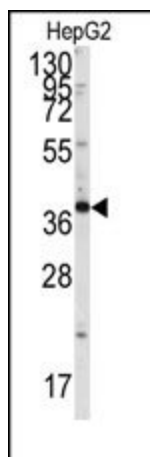
Bif (SH3GLB1) Rabbit Polyclonal Antibody

Product data:

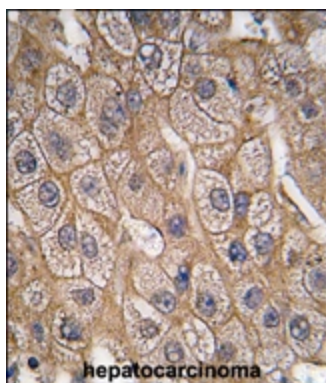
Product Type:	Primary Antibodies
Applications:	IHC, WB
Recommended Dilution:	ELISA: 1/1,000. Western blotting: 1/50 - 1/100. Immunohistochemistry: 1/10 - 1/50.
Reactivity:	Human
Host:	Rabbit
Isotype:	Ig
Clonality:	Polyclonal
Immunogen:	KLH conjugated synthetic peptide corresponding to amino acid residues surrounding Y80 of human SH3GLB1.
Specificity:	This antibody reacts to Endophilin B1.
Formulation:	PBS with 0.09% (W/V) sodium azide State: Aff - Purified State: Liquid purified Ig
Concentration:	lot specific
Purification:	Affinity chromatography on Protein A
Conjugation:	Unconjugated
Storage:	Store the antibody undiluted at 2-8°C for one month or (in aliquots) at -20°C for longer. Avoid repeated freezing and thawing.
Stability:	Shelf life: one year from despatch.
Gene Name:	SH3 domain containing GRB2 like endophilin B1
Database Link:	Entrez Gene 51100 Human Q9Y371
Background:	Endophilin B1 may be required for normal outer mitochondrial membrane dynamics. It is required for coatomer-mediated retrograde transport in certain cells. It may recruit other proteins to membranes with high curvature and may promote membrane fusion.
Synonyms:	SH3GLB1, KIAA0491, BIF1, Bif-1



[View online »](#)

Product images:

Western blot analysis of anti-Endophilin B1 Antibody (Y80) in HepG2 cell line lysates (35ug/lane). SH3GLB1 (arrow) was detected using the purified Pab.



Formalin-fixed and paraffin-embedded human hepatocarcinoma tissue reacted with Endophilin B1 Antibody (Y80), which was peroxidase-conjugated to the secondary antibody, followed by DAB staining.