

## Product datasheet for **AP14957PU-N**

### PI 4 Kinase type 2 beta (PI4K2B) (N-term) Rabbit Polyclonal Antibody

#### Product data:

Product Type:	Primary Antibodies
Applications:	IHC, WB
Recommended Dilution:	ELISA: 1/1,000. Western blotting: 1/100 - 1/500. Immunohistochemistry: 1/50 - 1/100.
Reactivity:	Human
Host:	Rabbit
Isotype:	Ig
Clonality:	Polyclonal
Immunogen:	This antibody is generated from rabbits immunized with a KLH conjugated synthetic peptide selected from the N-terminal region of human PI4K.
Specificity:	This antibody reacts to PI 4 kinase type 2 beta.
Formulation:	PBS with 0.09% (W/V) sodium azide State: Purified State: Liquid purified Ig
Concentration:	lot specific
Purification:	Protein G column, eluted with high and low pH buffers and neutralized immediately, followed by dialysis against PBS
Conjugation:	Unconjugated
Storage:	Store the antibody undiluted at 2-8°C for one month or (in aliquots) at -20°C for longer. Avoid repeated freezing and thawing.
Stability:	Shelf life: one year from despatch.
Gene Name:	phosphatidylinositol 4-kinase type 2 beta
Database Link:	<a href="#">Entrez Gene 55300 Human</a> <a href="#">Q8TCG2</a>



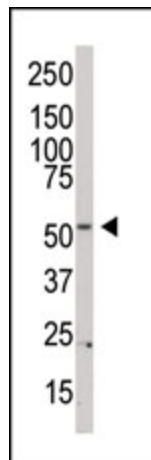
[View online »](#)

**Background:**

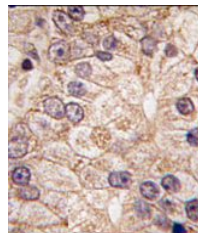
Protein kinases are enzymes that transfer a phosphate group from a phosphate donor, generally the  $\gamma$  phosphate of ATP, onto an acceptor amino acid in a substrate protein. By this basic mechanism, protein kinases mediate most of the signal transduction in eukaryotic cells, regulating cellular metabolism, transcription, cell cycle progression, cytoskeletal rearrangement and cell movement, apoptosis, and differentiation. With more than 500 gene products, the protein kinase family is one of the largest families of proteins in eukaryotes. The family has been classified in 8 major groups based on sequence comparison of their tyrosine (PTK) or serine/threonine (STK) kinase catalytic domains.

**Synonyms:**

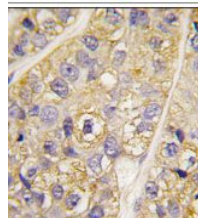
PI4KII, PI4KII-BETA

**Product images:**

Western blot analysis of anti-PI4K II beta Pab in HL60 cell lysate. PI4K II beta (arrow) was detected using purified Pab. Secondary HRP-anti-rabbit was used for signal visualization with chemiluminescence.



(TOP) Formalin-fixed and paraffin-embedded human prostate carcinoma tissue reacted with PI4K II beta antibody (N-term), which was peroxidase-conjugated to the secondary antibody, followed by DAB staining.



(BOTTOM) Formalin-fixed and paraffin-embedded human breast carcinoma tissue reacted with PI4K II beta antibody (N-term), which was peroxidase-conjugated to the secondary antibody, followed by DAB staining.