

## Product datasheet for **AP14936PU-N**

### PI 3 Kinase catalytic subunit gamma (PIK3CG) (C-term) Rabbit Polyclonal Antibody

#### Product data:

Product Type:	Primary Antibodies
Applications:	IHC, WB
Recommended Dilution:	ELISA: 1/1,000. Western Blot: 1/100-1/500 Immunohistochemistry: 1/50-1/100.
Reactivity:	Human
Host:	Rabbit
Isotype:	Ig
Clonality:	Polyclonal
Immunogen:	This PI3KCG antibody is generated from rabbits immunized with a KLH conjugated synthetic peptide between 1073~1102 amino acids from the C-terminal region of Human PI3KCG.
Specificity:	This antibody reacts to PI3KCG.
Formulation:	PBS with 0.09% (W/V) sodium azide State: Purified State: Liquid purified Ig
Concentration:	lot specific
Purification:	Protein G column, eluted with high and low pH buffers and neutralized immediately, followed by dialysis against PBS
Conjugation:	Unconjugated
Storage:	Store the antibody undiluted at 2-8°C for one month or (in aliquots) at -20°C for longer. Avoid repeated freezing and thawing.
Stability:	Shelf life: one year from despatch.
Gene Name:	phosphatidylinositol-4,5-bisphosphate 3-kinase catalytic subunit gamma
Database Link:	<a href="#">Entrez Gene 5294 Human P48736</a>



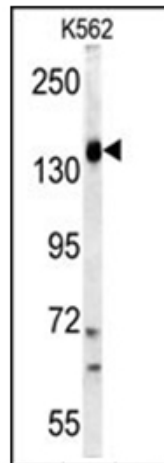
[View online »](#)

**Background:**

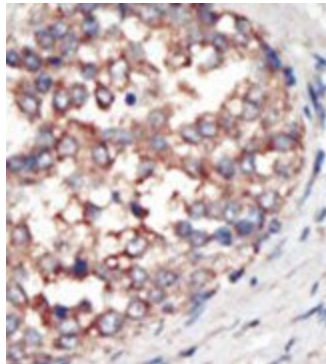
PI3KCG belongs to the pi3/pi4-kinase family of proteins. This protein is an enzyme that phosphorylates phosphoinositides on the 3-hydroxyl group of the inositol ring. It is an important modulator of extracellular signals, including those elicited by E-cadherin-mediated cell-cell adhesion, which plays an important role in maintenance of the structural and functional integrity of epithelia. In addition to its role in promoting assembly of adherens junctions, the protein is thought to play a pivotal role in the regulation of cytotoxicity in NK cells.

**Synonyms:**

PI3-kinase subunit gamma, PI3K-gamma, p120-PI3K

**Product images:**

Western blot analysis of PI3KCG Antibody (C-term) in K562 cell line lysates (35ug/lane). PI3KCG (arrow) was detected using the purified Pab.



Formalin-fixed and paraffin-embedded human cancer tissue reacted with the primary antibody, which was peroxidase-conjugated to the secondary antibody, followed by AEC staining.