

## Product datasheet for **AP14917PU-N**

### **P70 S6 Kinase beta (RPS6KB2) (C-term) Rabbit Polyclonal Antibody**

#### **Product data:**

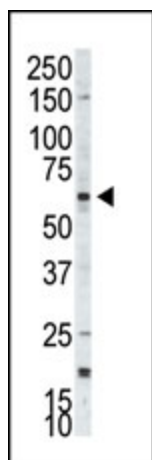
<b>Product Type:</b>	Primary Antibodies
<b>Applications:</b>	WB
<b>Recommended Dilution:</b>	ELISA: 1/1,000. Western blotting: 1/100 - 1/500. Flow cytometry.
<b>Reactivity:</b>	Human
<b>Host:</b>	Rabbit
<b>Isotype:</b>	Ig
<b>Clonality:</b>	Polyclonal
<b>Immunogen:</b>	This antibody is generated from rabbits immunized with a KLH conjugated synthetic peptide selected from the C-terminal region of human p70 S6Kbeta.
<b>Specificity:</b>	This antibody reacts to p70 S6Kbeta.
<b>Formulation:</b>	PBS with 0.09% (W/V) sodium azide State: Purified State: Liquid purified Ig
<b>Concentration:</b>	lot specific
<b>Purification:</b>	Protein G column, eluted with high and low pH buffers and neutralized immediately, followed by dialysis against PBS
<b>Conjugation:</b>	Unconjugated
<b>Storage:</b>	Maintain refrigerated at 2-8°C for up to 6 months. For long term storage store at -20°C.
<b>Gene Name:</b>	ribosomal protein S6 kinase B2
<b>Database Link:</b>	<a href="#">Entrez Gene 6199 Human</a> <a href="#">Q9UBS0</a>
<b>Background:</b>	This gene encodes a member of the RSK (ribosomal S6 kinase) family of serine/threonine kinases. This kinase contains 2 nonidentical kinase catalytic domains and phosphorylates the S6 ribosomal protein and eucaryotic translation initiation factor 4B. Phosphorylation of S6 leads to an increase in protein synthesis and cell proliferation.



[View online »](#)

**Synonyms:** Ribosomal protein S6 kinase beta-2, S6K2, S6K-beta-2, p70 ribosomal S6 kinase beta, p70 S6 kinase beta, P70S6K2, S6 kinase-related kinase, Serine/threonine-protein kinase 14B

**Product images:**



Western blot analysis of anti-p70S6Kbeta Pab in A375 cell lysate. p70S6Kbeta (arrow) was detected using purified Pab. Secondary HRP-anti-rabbit was used for signal visualization with chemiluminescence.