

Product datasheet for **AP14909PU-N**

MARK2 (C-term) Rabbit Polyclonal Antibody

Product data:

Product Type:	Primary Antibodies
Applications:	IHC, WB
Recommended Dilution:	ELISA: 1/1,000. Immunohistochemistry: 1/50 - 1/100. Western Blot: 1/250 - 1/500.
Reactivity:	Human, Mouse
Host:	Rabbit
Isotype:	Ig
Clonality:	Polyclonal
Immunogen:	This antibody is generated from rabbits immunized with a KLH conjugated synthetic peptide selected from the C-terminal region of human EMK.
Specificity:	This antibody reacts to MARK2 (EMK).
Formulation:	PBS with 0.09% (W/V) sodium azide State: Purified State: Liquid purified Ig
Concentration:	lot specific
Purification:	Protein G column, eluted with high and low pH buffers and neutralized immediately, followed by dialysis against PBS
Conjugation:	Unconjugated
Storage:	Store the antibody undiluted at 2-8°C for one month or (in aliquots) at -20°C for longer. Avoid repeated freezing and thawing.
Stability:	Shelf life: one year from despatch.
Gene Name:	microtubule affinity regulating kinase 2
Database Link:	Entrez Gene 13728 Mouse Entrez Gene 2011 Human Q7KZ17



[View online »](#)

Background:

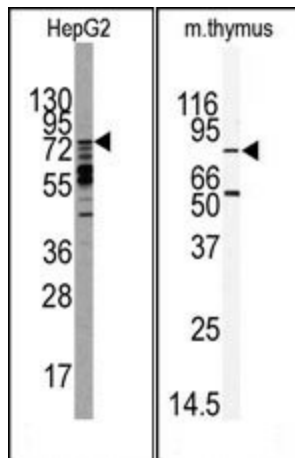
Protein kinases are enzymes that transfer a phosphate group from a phosphate donor, generally the γ phosphate of ATP, onto an acceptor amino acid in a substrate protein. By this basic mechanism, protein kinases mediate most of the signal transduction in eukaryotic cells, regulating cellular metabolism, transcription, cell cycle progression, cytoskeletal rearrangement and cell movement, apoptosis, and differentiation. With more than 500 gene products, the protein kinase family is one of the largest families of proteins in eukaryotes. The family has been classified in 8 major groups based on sequence comparison of their tyrosine (PTK) or serine/threonine (STK) kinase catalytic domains.

Synonyms:

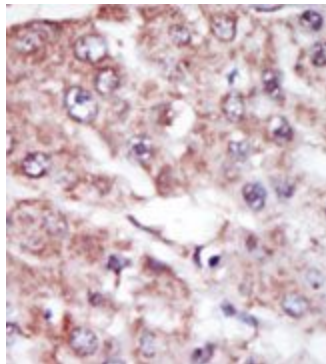
Serine/threonine-protein kinase, 2, ELKL motif kinase, EMK1, PAR1 homolog, MARK2, EMK1

Protein Families:

Druggable Genome, Protein Kinase

Product images:


(LEFT) Western blot analysis of anti-EMK Antibody (C-term) in HepG2 cell line lysates. EMK-V581 (arrow) was detected using the purified Pab. (RIGHT) Western blot analysis of anti-EMK Antibody (C-term) in mouse thymus tissue lysates (35ug/lane). EMK (arrow) was detected using the purified Pab.



Formalin-fixed and paraffin-embedded human cancer tissue reacted with the primary antibody, which was peroxidase-conjugated to the secondary antibody, followed by AEC staining.