

Product datasheet for **AP14906PU-N**

cGKI (PRKG1) (beta isoform) Rabbit Polyclonal Antibody

Product data:

Product Type:	Primary Antibodies
Applications:	IHC, WB
Recommended Dilution:	ELISA: 1/1,000. Western blotting: 1/100 - 1/500. Immunohistochemistry: 1/50 - 1/100.
Reactivity:	Human, Mouse
Host:	Rabbit
Isotype:	Ig
Clonality:	Polyclonal
Immunogen:	This antibody is generated from rabbits immunized with a KLH conjugated synthetic peptide selected from the C-terminal region of human cGKI beta.
Specificity:	This antibody reacts to cGKI beta.
Formulation:	PBS with 0.09% (W/V) sodium azide State: Purified State: Liquid purified Ig
Concentration:	lot specific
Purification:	Protein G column, eluted with high and low pH buffers and neutralized immediately, followed by dialysis against PBS
Conjugation:	Unconjugated
Storage:	Store the antibody undiluted at 2-8°C for one month or (in aliquots) at -20°C for longer. Avoid repeated freezing and thawing.
Stability:	Shelf life: one year from despatch.
Gene Name:	protein kinase, cGMP-dependent, type I
Database Link:	Entrez Gene 19091 Mouse Entrez Gene 5592 Human Q13976



[View online »](#)

Background:

Protein kinases are enzymes that transfer a phosphate group from a phosphate donor, generally the γ phosphate of ATP, onto an acceptor amino acid in a substrate protein. By this basic mechanism, protein kinases mediate most of the signal transduction in eukaryotic cells, regulating cellular metabolism, transcription, cell cycle progression, cytoskeletal rearrangement and cell movement, apoptosis, and differentiation. With more than 500 gene products, the protein kinase family is one of the largest families of proteins in eukaryotes. The family has been classified in 8 major groups based on sequence comparison of their tyrosine (PTK) or serine/threonine (STK) kinase catalytic domains.

Synonyms:

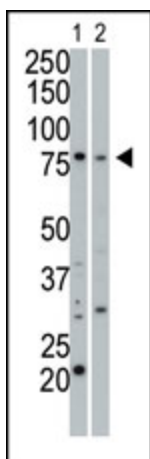
PRKG1, PRKGR1A, PRKGR1B, CKG1A, CKG1B, PKG, PGK, cGKI-alpha

Protein Families:

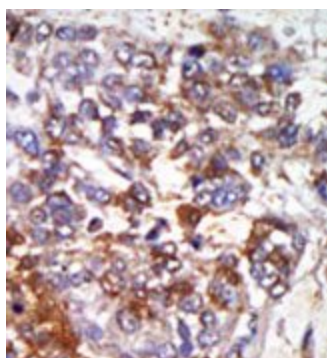
Druggable Genome, Protein Kinase

Protein Pathways:

Gap junction, Long-term depression, Olfactory transduction, Vascular smooth muscle contraction

Product images:


The anti-cGKI beta Pab is used in Western blot to detect cGKI beta in 293 cell lysate (Lane 1) and mouse small intestine tissue lysate (Lane 2).



Formalin-fixed and paraffin-embedded human cancer tissue reacted with the primary antibody, which was peroxidase-conjugated to the secondary antibody, followed by AEC staining.