

Product datasheet for **AP14900PU-N**

Cytochrome P450 2C8 (CYP2C8) (N-term) Rabbit Polyclonal Antibody

Product data:

Product Type:	Primary Antibodies
Applications:	WB
Recommended Dilution:	ELISA: 1/1,000. Western blotting: 1/50 - 1/100.
Reactivity:	Human
Host:	Rabbit
Isotype:	Ig
Clonality:	Polyclonal
Immunogen:	This antibody is generated from rabbits immunized with a KLH conjugated synthetic peptide selected from the N-terminal region of human CYP2C8.
Specificity:	This antibody reacts to CYP2C8.
Formulation:	PBS with 0.09% (W/V) sodium azide State: Purified State: Liquid purified Ig
Concentration:	lot specific
Purification:	Prepared by Saturated Ammonium Sulfate (SAS) precipitation followed by dialysis against PBS
Conjugation:	Unconjugated
Storage:	Store the antibody undiluted at 2-8°C for one month or (in aliquots) at -20°C for longer. Avoid repeated freezing and thawing.
Stability:	Shelf life: one year from despatch.
Gene Name:	cytochrome P450 family 2 subfamily C member 8
Database Link:	Entrez Gene 1558 Human P10632



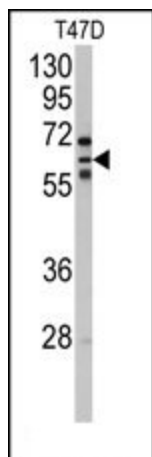
[View online »](#)

Background:

CYP2C8 is a member of the cytochrome P450 superfamily of enzymes. The cytochrome P450 proteins are monooxygenases which catalyze many reactions involved in drug metabolism and synthesis of cholesterol, steroids and other lipids. This protein localizes to the endoplasmic reticulum and its expression is induced by phenobarbital. The enzyme is known to metabolize many xenobiotics, including the anticonvulsive drug mephenytoin, benzo(a)pyrene, 7-ethoxycoumarin, and the anti-cancer drug taxol.

Synonyms:

Cytochrome P450 2C8, CYP11C8, Cytochrome P450 form 1, Cytochrome P450 MP-12/MP-20, Cytochrome P450 IIC2

Product images:

Western blot analysis of anti-CYP2C8 Antibody (N-term) in T47D cell line lysates (35ug/lane). CYP2C8 (arrow) was detected using the purified Pab.