

Product datasheet for **AP14899PU-N**

Cytochrome P450 26B (CYP26B1) (C-term) Rabbit Polyclonal Antibody

Product data:

Product Type:	Primary Antibodies
Applications:	IHC, WB
Recommended Dilution:	ELISA: 1/1,000. Western blotting: 1/50 - 1/100. Immunohistochemistry: 1/10 - 1/50.
Reactivity:	Human
Host:	Rabbit
Isotype:	Ig
Clonality:	Polyclonal
Immunogen:	This antibody is generated from rabbits immunized with a KLH conjugated synthetic peptide selected from the C-terminal region of human CYP26B1.
Specificity:	This antibody reacts to CYP26B1.
Formulation:	PBS with 0.09% (W/V) sodium azide State: Purified State: Liquid purified Ig
Concentration:	lot specific
Purification:	Prepared by Saturated Ammonium Sulfate (SAS) precipitation followed by dialysis against PBS
Conjugation:	Unconjugated
Storage:	Store the antibody undiluted at 2-8°C for one month or (in aliquots) at -20°C for longer. Avoid repeated freezing and thawing.
Stability:	Shelf life: one year from despatch.
Gene Name:	cytochrome P450 family 26 subfamily B member 1
Database Link:	Entrez Gene 56603 Human Q9NR63



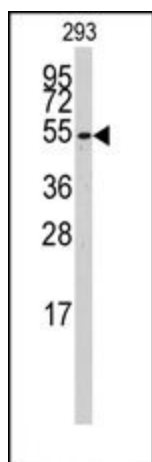
[View online »](#)

Background:

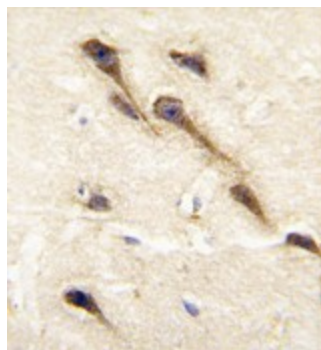
CYP26B1 is a member of the cytochrome P450 superfamily of enzymes. The cytochrome P450 proteins are monooxygenases that catalyze many reactions involved in drug metabolism and the synthesis of cholesterol, steroids and other lipids. The enzyme encoded by this gene is involved in the specific inactivation of all-trans-retinoic acid to hydroxylated forms, such as 4-oxo-, 4-OH-, and 18-OH-all-trans-retinoic acid.

Synonyms:

CYP26A2, Cytochrome P450RAI2, Cytochrome P450 26B1, Cytochrome P450 26A2

Product images:

Western blot analysis of anti-CYP26B1 Antibody (C-term) in 293 cell line lysates (35ug/lane). CYP26B1 (arrow) was detected using the purified Pab.



Formalin-fixed and paraffin-embedded human brain tissue reacted with CYP26B1 antibody (C-term), which was peroxidase-conjugated to the secondary antibody, followed by DAB staining.