

Product datasheet for **AP14869PU-N**

STK39 (Center) Rabbit Polyclonal Antibody

Product data:

| | |
|-----------------------|---|
| Product Type: | Primary Antibodies |
| Applications: | IHC, WB |
| Recommended Dilution: | ELISA: 1/1,000. Western blotting: 1/100 - 1/500. Immunohistochemistry: 1/50 - 1/100. |
| Reactivity: | Human, Mouse |
| Host: | Rabbit |
| Isotype: | Ig |
| Clonality: | Polyclonal |
| Immunogen: | This antibody is generated from rabbits immunized with a KLH conjugated synthetic peptide selected from the central region of human SPAK. |
| Specificity: | This antibody reacts to SPAK. |
| Formulation: | PBS with 0.09% (W/V) sodium azide State: Purified State: Liquid purified Ig |
| Concentration: | lot specific |
| Purification: | Protein G column, eluted with high and low pH buffers and neutralized immediately, followed by dialysis against PBS |
| Conjugation: | Unconjugated |
| Storage: | Store the antibody undiluted at 2-8°C for one month or (in aliquots) at -20°C for longer. Avoid repeated freezing and thawing. |
| Stability: | Shelf life: one year from despatch. |
| Gene Name: | serine/threonine kinase 39 |
| Database Link: | Entrez Gene 27347 Human Q9UEW8 |



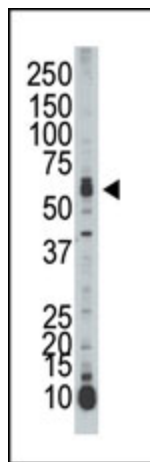
[View online »](#)

Background:

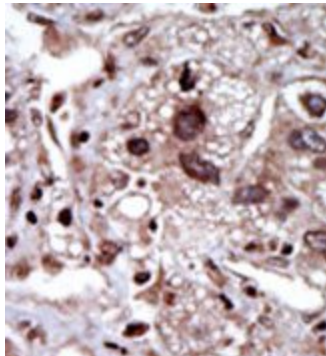
SPAK is a serine/threonine kinase containing an N-terminal series of proline and alanine repeats (PAPA box), followed by a serine/threonine kinase catalytic domain, a nuclear localization signal, a consensus caspase cleavage recognition motif, and a C-terminal region. Northern blot analysis detects ubiquitous expression, most abundantly in brain and pancreas. SPAK can phosphorylate itself and an exogenous substrate in vitro. SPAK immunoprecipitates from transfected mammalian cells in a complex with another serine/threonine kinase that phosphorylates catalytically inactive SPAK. SPAK activates the p38 MAP kinase pathway in cotransfection assays. Full-length SPAK is expressed in the cytoplasm in transfected cells, while a mutant corresponding to caspase-cleaved STK39 localizes predominantly in the nucleus.

Synonyms:

Ste-20-related kinase, DCHT

Product images:

Western blot analysis of anti-SPAK Pab in mouse liver tissue lysate. SPAK (arrow) was detected using purified Pab. Secondary HRP-anti-rabbit was used for signal visualization with chemiluminescence.



Formalin-fixed and paraffin-embedded human cancer tissue reacted with the primary antibody, which was peroxidase-conjugated to the secondary antibody, followed by DAB staining.