

Product datasheet for **AP14848PU-N**

LOK (STK10) (C-term) Rabbit Polyclonal Antibody

Product data:

| | |
|-----------------------|---|
| Product Type: | Primary Antibodies |
| Applications: | IHC, WB |
| Recommended Dilution: | ELISA: 1/1,000. Western blotting: 1/100 - 1/500. Immunohistochemistry: 1/50 - 1/100. |
| Reactivity: | Human |
| Host: | Rabbit |
| Isotype: | Ig |
| Clonality: | Polyclonal |
| Immunogen: | This antibody is generated from rabbits immunized with a KLH conjugated synthetic peptide selected from the C-terminal region of human LOK. |
| Specificity: | This antibody reacts to LOK. |
| Formulation: | PBS with 0.09% (W/V) sodium azide State: Purified State: Liquid purified Ig |
| Concentration: | lot specific |
| Purification: | Protein G column, eluted with high and low pH buffers and neutralized immediately, followed by dialysis against PBS |
| Conjugation: | Unconjugated |
| Storage: | Store the antibody undiluted at 2-8°C for one month or (in aliquots) at -20°C for longer. Avoid repeated freezing and thawing. |
| Stability: | Shelf life: one year from despatch. |
| Gene Name: | serine/threonine kinase 10 |
| Database Link: | Entrez Gene 6793 Human O94804 |



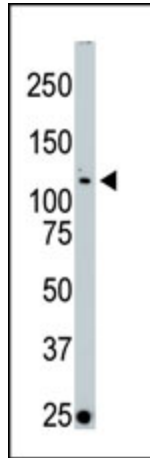
[View online »](#)

Background:

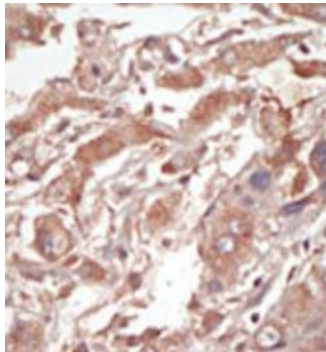
This gene encodes a member of the Ste20 family of serine/threonine protein kinases, and is similar to several known polo-like kinase kinases. The protein can associate with and phosphorylate polo-like kinase 1, and overexpression of a kinase-dead version of the protein interferes with normal cell cycle progression. The kinase can also negatively regulate interleukin 2 expression in T-cells via the mitogen activated protein kinase kinase 1 pathway.

Synonyms:

STK10, LOK, Serine/threonine-protein kinase 10, EC=2.7.11.1, Lymphocyte-oriented kinase

Product images:

The anti-LOK Pab is used in Western blot to detect LOK in Jurkat cell lysate.



Formalin-fixed and paraffin-embedded human cancer tissue reacted with the primary antibody, which was peroxidase-conjugated to the secondary antibody, followed by DAB staining.