

Product datasheet for **AP14844PU-N**

MAP3K8 (C-term) Rabbit Polyclonal Antibody

Product data:

| | |
|-----------------------|---|
| Product Type: | Primary Antibodies |
| Applications: | IHC, WB |
| Recommended Dilution: | ELISA: 1/1,000. Western blotting: 1/100 - 1/500. Immunohistochemistry: 1/50 - 1/100. |
| Reactivity: | Human |
| Host: | Rabbit |
| Isotype: | Ig |
| Clonality: | Polyclonal |
| Immunogen: | This antibody is generated from rabbits immunized with a KLH conjugated synthetic peptide selected from the C-terminal region of human COT. |
| Specificity: | This antibody reacts to COT (MAP3K8/MEKK8). |
| Formulation: | PBS with 0.09% (W/V) sodium azide State: Purified State: Liquid purified Ig |
| Concentration: | lot specific |
| Purification: | Protein G column, eluted with high and low pH buffers and neutralized immediately, followed by dialysis against PBS |
| Conjugation: | Unconjugated |
| Storage: | Store the antibody undiluted at 2-8°C for one month or (in aliquots) at -20°C for longer. Avoid repeated freezing and thawing. |
| Stability: | Shelf life: one year from despatch. |
| Gene Name: | mitogen-activated protein kinase kinase kinase 8 |
| Database Link: | Entrez Gene 1326 Human P41279 |



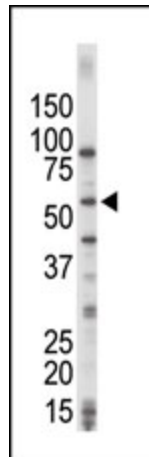
[View online »](#)

Background:

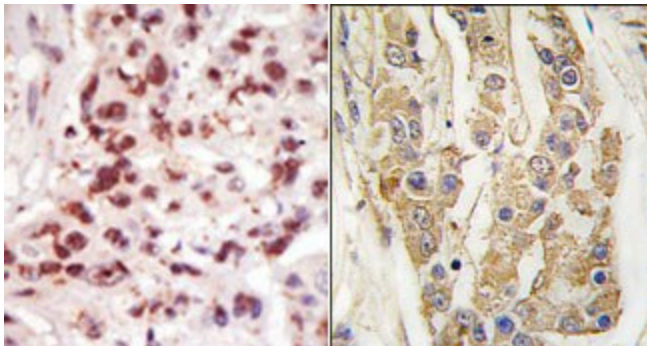
COT, a member of the MAPKKK subfamily of Ser/Thr protein kinases, is able to activate NF-kappa-B 1 by stimulating proteasome-mediated proteolysis of NF-kappa-B 1/p105. It plays a role in the cell cycle. The longer form of cot has some transforming activity, although it is much weaker than the activated cot oncoprotein. This cytoplasmic protein is expressed in several normal tissues and human tumor-derived cell lines. The 58 kDa form is activated specifically during the S and G2/M phases of the cell cycle. The longer form undergoes phosphorylation on Ser residues mainly, and the shorter form on both Ser and Thr residues.

Synonyms:

MAPK, Tumor progression locus 2, COT, ESTF

Product images:

The anti-COT Pab is used in Western blot to detect COT in HeLa cell lysate.



(LEFT) Formalin-fixed and paraffin-embedded human cancer tissue reacted with the primary antibody, which was peroxidase-conjugated to the secondary antibody, followed by DAB staining. (RIGHT) Formalin-fixed and paraffin-embedded human breast carcinoma tissue reacted with COT Antibody (C-term), which was peroxidase-conjugated to the secondary antibody, followed by DAB staining.