

Product datasheet for **AP14812PU-N**

PIM1 Rabbit Polyclonal Antibody

Product data:

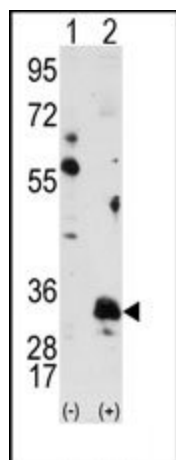
Product Type:	Primary Antibodies
Applications:	IHC, WB
Recommended Dilution:	ELISA: 1/1,000. Western blotting: 1/50 - 1/100. Immunohistochemistry: 1/50 - 1/100.
Reactivity:	Human
Host:	Rabbit
Isotype:	Ig
Clonality:	Polyclonal
Immunogen:	This antibody is generated from rabbits immunized with PIM1 recombinant protein.
Specificity:	This antibody reacts to PIM1.
Formulation:	PBS with 0.09% (W/V) sodium azide State: Purified State: Liquid purified Ig
Concentration:	lot specific
Purification:	Prepared by Saturated Ammonium Sulfate (SAS) precipitation followed by dialysis against PBS
Conjugation:	Unconjugated
Storage:	Store the antibody undiluted at 2-8°C for one month or (in aliquots) at -20°C for longer. Avoid repeated freezing and thawing.
Stability:	Shelf life: one year from despatch.
Gene Name:	Pim-1 proto-oncogene, serine/threonine kinase
Database Link:	Entrez Gene 5292 Human P11309
Background:	PIM1, which belongs to the Serine/Threonine protein kinase family, is thought to play a role in signal transduction in blood cells. The protooncogene PIM1 encodes a protein kinase upregulated in prostate cancer. It may affect the structure or silencing of chromatin by phosphorylating HP1 gamma/CBX3. PIM1 is expressed primarily in cells of the hematopoietic and germ line lineages.



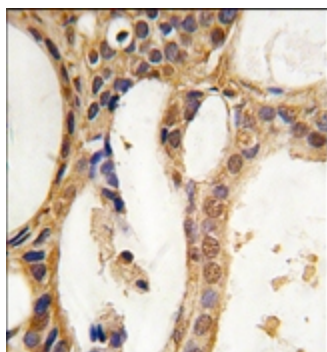
[View online »](#)

Synonyms: Pim-1

Product images:



Western blot analysis of PIM1 (arrow) using PIM1 Antibody. 293 cell lysates (2 ug/lane) either nontransfected (Lane 1) or transiently transfected with the PIM1 gene (Lane 2) (Origene Technologies).



Formalin-fixed and paraffin-embedded human prostata carcinoma tissue reacted with PIM1 antibody, which was peroxidase-conjugated to the secondary antibody, followed by DAB staining.