

Product datasheet for **AP14810PU-N**

BUB1B-PAK6 Rabbit Polyclonal Antibody

Product data:

Product Type:	Primary Antibodies
Applications:	IP, WB
Recommended Dilution:	ELISA: 1/1,000. Western blotting: 1/100 - 1/500. Immunoprecipitation: 1/100. Flow cytometry.
Reactivity:	Human
Host:	Rabbit
Isotype:	Ig
Clonality:	Polyclonal
Immunogen:	This antibody is generated from rabbits immunized with a KLH conjugated synthetic peptide selected from aa 131~146 of human PAK6.
Specificity:	This antibody reacts to PAK6.
Formulation:	PBS with 0.09% (W/V) sodium azide State: Purified State: Liquid purified Ig
Concentration:	lot specific
Purification:	Protein G column, eluted with high and low pH buffers and neutralized immediately, followed by dialysis against PBS
Conjugation:	Unconjugated
Storage:	Store the antibody undiluted at 2-8°C for one month or (in aliquots) at -20°C for longer. Avoid repeated freezing and thawing.
Stability:	Shelf life: one year from despatch.
Gene Name:	BUB1B-PAK6 readthrough
Database Link:	Entrez Gene 106821730 Human Q9NQU5



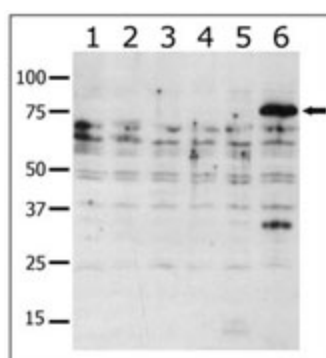
[View online »](#)

Background:

The PAK6 protein shares a high degree of sequence similarity with p21-activated kinase (PAK) family members. The proteins of this family are Rac/Cdc42-associated Ste20-like Ser/Thr protein kinases, characterized by a highly conserved amino-terminal Cdc42/Rac interactive binding (CRIB) domain and a carboxyl-terminal kinase domain. PAK kinases are implicated in the regulation of a number of cellular processes, including cytoskeleton rearrangement, apoptosis and the MAP kinase signaling pathway. PAK6 was found to interact with androgen receptor (AR), which is a steroid hormone-dependent transcription factor that is important for male sexual differentiation and development. The p21-activated protein kinase 6 gene was found to be highly expressed in testis and prostate tissues and the encoded protein was shown to cotranslocate into the nucleus with AR in response to androgen.

Synonyms:

p21-activated kinase 6, PAK-6

Product images:


Western blot analysis of anti-PAK6 Pab in lysates from transiently transfected COS7 cells. Lane 1: negative control, Lane 2: PAK1-expressing cells, Lane 3: PAK2-expressing cells, Lane 4: PAK4-expressing cells, Lane 5: PAK5-expressing cells, and Lane 6: PAK6-expressing cells. PAK6 (arrow) was detected using purified Pab.