

Product datasheet for **AP14804PU-N**

PAK3 (Center) Rabbit Polyclonal Antibody

Product data:

Product Type:	Primary Antibodies
Applications:	IHC, WB
Recommended Dilution:	ELISA: 1/1,000. Western blotting: 1/50 - 1/100. Immunohistochemistry: 1/50 - 1/100.
Reactivity:	Human
Host:	Rabbit
Isotype:	Ig
Clonality:	Polyclonal
Immunogen:	This antibody is generated from rabbits immunized with a KLH conjugated synthetic peptide selected from the central region of human PAK3.
Specificity:	This antibody reacts to PAK3.
Formulation:	PBS with 0.09% (W/V) sodium azide State: Purified State: Liquid purified Ig
Concentration:	lot specific
Purification:	Protein G column, eluted with high and low pH buffers and neutralized immediately, followed by dialysis against PBS
Conjugation:	Unconjugated
Storage:	Store the antibody undiluted at 2-8°C for one month or (in aliquots) at -20°C for longer. Avoid repeated freezing and thawing.
Stability:	Shelf life: one year from despatch.
Gene Name:	p21 (RAC1) activated kinase 3
Database Link:	Entrez Gene 5063 Human O75914



[View online »](#)

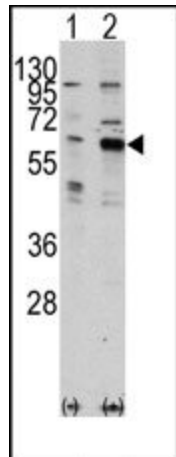
Background:

PAK3, a member of the STE20 subfamily of Ser/Thr protein kinases, acts on a variety of targets. PAK3 interacts tightly with GTP-bound but not GDP-bound CDC42/p21 and RAC1. It shows highly specific binding to the SH3 domains of phospholipase C-gamma and of adapter protein NCK. This protein is highly expressed in postmitotic neurons of the developing and postnatal cerebral cortex and hippocampus. PAK3 is autophosphorylated when activated by CDC42/p21. Defects in PAK3 are the cause of non-specific X-linked nonsyndromic mental retardation type 30 (MRX30). The protein structure contains 1 CRIB domain.

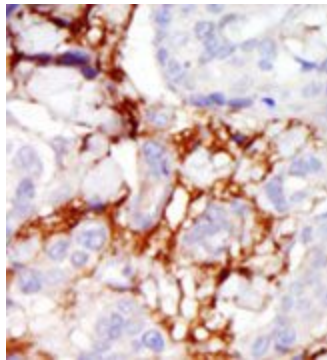
Synonyms:

PAK 3, PAK-3, Beta-PAK, PAK beta, p21-activated kinase 3, Oligophrenin-3, OPHN3

Product images:



Western blot analysis of PAK3 (arrow) using rabbit polyclonal PAK3 Antibody. 293 cell lysates (2 ug/lane) either nontransfected (Lane 1) or transiently transfected with the PAK3 gene (Lane 2) (Origene Technologies).



Formalin-fixed and paraffin-embedded human cancer tissue reacted with the primary antibody, which was peroxidase-conjugated to the secondary antibody, followed by AEC staining.