

Product datasheet for **AP14802PU-N**

PAK2 (N-term) Rabbit Polyclonal Antibody

Product data:

Product Type:	Primary Antibodies
Applications:	IHC, WB
Recommended Dilution:	ELISA: 1/1,000. Western blotting: 1/100 - 1/500. Immunohistochemistry: 1/50 - 1/100.
Reactivity:	Human
Host:	Rabbit
Isotype:	Ig
Clonality:	Polyclonal
Immunogen:	This antibody is generated from rabbits immunized with a KLH conjugated synthetic peptide selected from the N-terminal region of human PAK2.
Specificity:	This antibody reacts to PAK2.
Formulation:	PBS with 0.09% (W/V) sodium azide State: Purified State: Liquid purified Ig
Concentration:	lot specific
Purification:	Protein G column, eluted with high and low pH buffers and neutralized immediately, followed by dialysis against PBS
Conjugation:	Unconjugated
Storage:	Store the antibody undiluted at 2-8°C for one month or (in aliquots) at -20°C for longer. Avoid repeated freezing and thawing.
Stability:	Shelf life: one year from despatch.
Gene Name:	p21 (RAC1) activated kinase 2
Database Link:	Entrez Gene 5062 Human Q13177



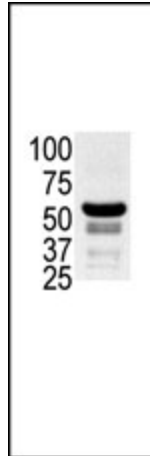
[View online »](#)

Background:

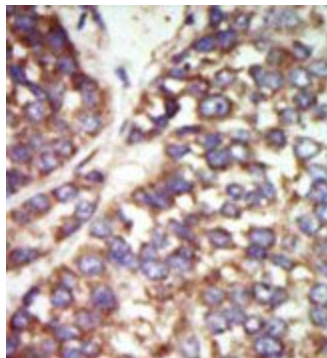
PAK2, a member of the STE20 subfamily of Ser/Thr protein kinases, acts on a variety of targets. It phosphorylates ribosomal protein S6, histone H4 and myelin basic protein. PAK2 interacts tightly with GTP-bound but not GDP-bound CDC42/p21 and RAC1. Expression is ubiquitous, with higher levels seen in skeletal muscle, ovary, thymus and spleen. PAK2 is autophosphorylated when activated by CDC42/p21. The protein structure contains 1 CRIB domain.

Synonyms:

PAK 2, PAK-2, Gamma-PAK, PAK gamma, PAK65, p21-activated kinase 2, p58

Product images:

The anti-PAK2 Pab is used in Western blot to detect PAK2 in ovary cell lysate.



Formalin-fixed and paraffin-embedded human cancer tissue reacted with the primary antibody, which was peroxidase-conjugated to the secondary antibody, followed by DAB staining.