

## Product datasheet for **AP14801PU-N**

### PAK1 Rabbit Polyclonal Antibody

#### Product data:

Product Type:	Primary Antibodies
Applications:	IHC, WB
Recommended Dilution:	ELISA: 1/1,000. Western blotting: 1/50 - 1/100. Immunohistochemistry: 1/10 - 1/50.
Reactivity:	Human
Host:	Rabbit
Isotype:	Ig
Clonality:	Polyclonal
Immunogen:	This antibody is generated from rabbits immunized with a KLH conjugated synthetic peptide corresponding to amino acid residues surrounding T423 of human PAK1.
Specificity:	This antibody reacts to PAK1.
Formulation:	PBS with 0.09% (W/V) sodium azide State: Aff - Purified State: Liquid purified Ig
Concentration:	lot specific
Purification:	Protein A column, followed by peptide affinity purification
Conjugation:	Unconjugated
Storage:	Store the antibody undiluted at 2-8°C for one month or (in aliquots) at -20°C for longer. Avoid repeated freezing and thawing.
Stability:	Shelf life: one year from despatch.
Gene Name:	p21 (RAC1) activated kinase 1
Database Link:	<a href="#">Entrez Gene 5058 Human Q13153</a>



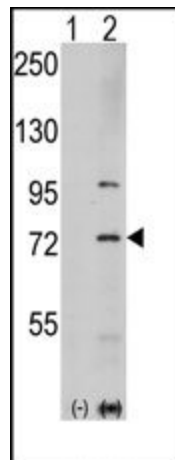
[View online »](#)

**Background:**

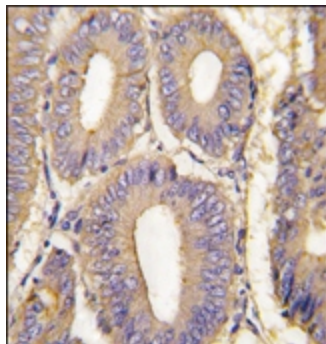
PAK1, a member of the STE20 subfamily of Ser/Thr protein kinases, acts on a variety of targets. It is likely to be the GTPase effector that links the Rho-related GTPases to the JNK MAP kinase pathway. Activity is inhibited in cells undergoing apoptosis, potentially due to binding of CDC2L1 and CDC2L2. The protein interacts tightly with GTP-bound but not GDP-bound CDC42/P21 and RAC1. PAK1 binds to the caspase-cleaved p110 isoform of CDC2L1 and CDC2L2, p110C, but not the full-length proteins. It is a component of cytoplasmic complexes, which also contain PXN, ARHGEF6 and GIT1. The protein is autophosphorylated when activated by CDC42/p21. Structurally, the PAK1 contains 1 CRIB domain.

**Synonyms:**

PAK 1, PAK-1, Alpha-PAK, PAK alpha, p21-activated kinase 1, p65-PAK

**Product images:**

Western blot analysis of PAK1 (arrow) using rabbit polyclonal PAK1 Antibody. 293 cell lysates (2 ug/lane) either nontransfected (Lane 1) or transiently transfected with the PAK1 gene (Lane 2)



Formalin-fixed and paraffin-embedded human colon carcinoma tissue reacted with PAK1 Antibody, which was peroxidase-conjugated to the secondary antibody, followed by DAB staining.