

## Product datasheet for **AP14791PU-N**

### MAP3K9 (C-term) Rabbit Polyclonal Antibody

#### Product data:

Product Type:	Primary Antibodies
Applications:	IHC, WB
Recommended Dilution:	ELISA: 1/1,000. Western blotting: 1/100 - 1/500. Immunohistochemistry: 1/50 - 1/100.
Reactivity:	Human, Mouse, Rat
Host:	Rabbit
Isotype:	Ig
Clonality:	Polyclonal
Immunogen:	This antibody is generated from rabbits immunized with a KLH conjugated synthetic peptide selected from the C-terminal region of human MLK1.
Specificity:	This antibody reacts to MLK1.
Formulation:	PBS with 0.09% (W/V) sodium azide State: Purified State: Liquid purified Ig
Concentration:	lot specific
Purification:	Protein G column, eluted with high and low pH buffers and neutralized immediately, followed by dialysis against PBS
Conjugation:	Unconjugated
Storage:	Store the antibody undiluted at 2-8°C for one month or (in aliquots) at -20°C for longer. Avoid repeated freezing and thawing.
Stability:	Shelf life: one year from despatch.
Gene Name:	mitogen-activated protein kinase kinase kinase 9
Database Link:	<a href="#">Entrez Gene 4293 Human P80192</a>



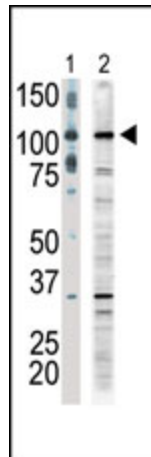
[View online »](#)

**Background:**

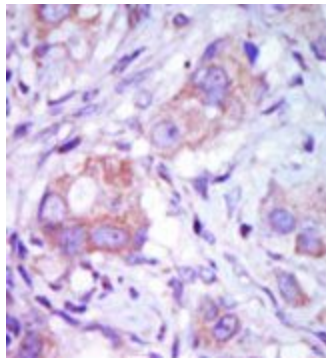
MLK1 is a MLK(MAP3K) type protein kinase. The catalytic domain of mixed-lineage kinases (MLKs) kinases have amino acid sequence similarity to both the tyr-specific and the ser/thr-specific kinase classes. In addition to the unusual nature of the kinase catalytic domains, MLK1 and MLK2 contain 2 leu/ile-zipper motifs and a basic sequence near their C-termini. MLK1 is a member of the neuronal apoptotic JNK/c-Jun pathway acting between Rac1/Cdc42 and MKK4 and -7 in death signaling. MLK1 expression has been documented in human epithelial tumor cell lines of colonic, breast and esophageal origin.

**Synonyms:**

MLK1, PRKE1, M3K9

**Product images:**

The anti-MLK1 Pab is used in Western blot to detect MLK1 in A375 cell lysate (lane 1) and rat testis tissue lysate (lane 2).



Formalin-fixed and paraffin-embedded human cancer tissue reacted with the primary antibody, which was peroxidase-conjugated to the secondary antibody, followed by DAB staining.