

Product datasheet for **AP14768PU-N**

MEK5 (MAP2K5) Rabbit Polyclonal Antibody

Product data:

Product Type:	Primary Antibodies
Applications:	IHC, WB
Recommended Dilution:	ELISA: 1/1,000. Western blotting: 1/50 - 1/100. Immunohistochemistry: 1/10 - 1/50.
Reactivity:	Human
Host:	Rabbit
Isotype:	Ig
Clonality:	Polyclonal
Immunogen:	This antibody is generated from rabbits immunized with a KLH conjugated synthetic peptide corresponding to amino acid residues surrounding S149 of human MAP2K5.
Specificity:	This antibody reacts to MAP2K5.
Formulation:	PBS with 0.09% (W/V) sodium azide State: Aff - Purified State: Liquid purified Ig
Concentration:	lot specific
Purification:	Protein A column, followed by peptide affinity purification
Conjugation:	Unconjugated
Storage:	Store the antibody undiluted at 2-8°C for one month or (in aliquots) at -20°C for longer. Avoid repeated freezing and thawing.
Stability:	Shelf life: one year from despatch.
Gene Name:	mitogen-activated protein kinase kinase 5
Database Link:	Entrez Gene 5607 Human Q13163



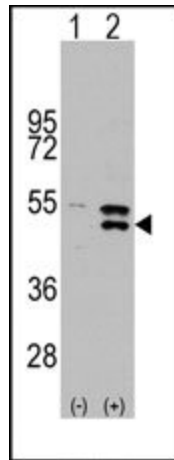
[View online »](#)

Background:

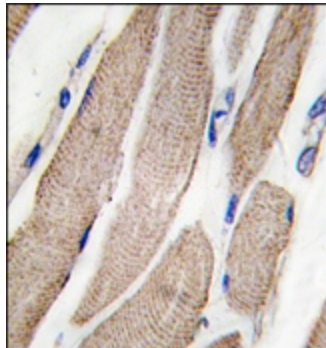
MAP2K5 is a dual specificity protein kinase that belongs to the MAP kinase kinase family. It specifically interacts with and activates MAPK7/ERK5. This kinase itself can be phosphorylated and activated by MAP3K3/MEKK3, as well as by atypical protein kinase C isoforms (aPKCs). The signal cascade mediated by MAP2K5 is involved in growth factor stimulated cell proliferation and muscle cell differentiation.

Synonyms:

MAP kinase kinase 5, MAPKK 5, MEK5, MKK5

Product images:

Western blot analysis of MAP2K5 (arrow) using rabbit polyclonal MAP2K5 Antibody. 293 cell lysates (2 ug/lane) either nontransfected (Lane 1) or transiently transfected with the MAP2K5 gene (Lane 2)



Formalin-fixed and paraffin-embedded human skeletal muscle tissue reacted with MAP2K5 Antibody, which was peroxidase-conjugated to the secondary antibody, followed by DAB staining.