

## Product datasheet for **AP14750PU-N**

### **ALOX15 (C-term) Rabbit Polyclonal Antibody**

#### **Product data:**

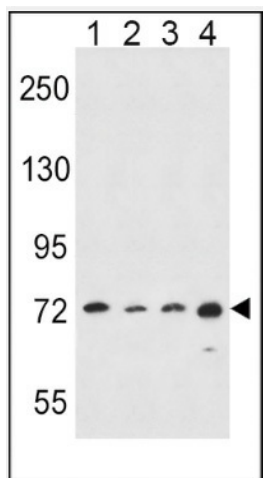
Product Type:	Primary Antibodies
Applications:	IF, IHC, WB
Recommended Dilution:	<b>ELISA:</b> 1/1,000. <b>Western blotting:</b> 1/100-1/500. <b>Immunofluorescence:</b> 1/10-1/50 <b>Immunohistochemistry on Paraffin Sections:</b> 1/10-1/50.
Reactivity:	Human
Host:	Rabbit
Isotype:	Ig
Clonality:	Polyclonal
Immunogen:	KLH conjugated synthetic peptide between 619~649 amino acids from the C-terminal region of Human ALOX15.
Specificity:	This antibody recognizes Human ALOX15 (C-term).
Formulation:	PBS with 0.09% (W/V) Sodium Azide as preservative State: Purified State: Liquid purified Ig
Concentration:	lot specific
Purification:	Prepared by Saturated Ammonium Sulfate (SAS) precipitation followed by dialysis against PBS
Conjugation:	Unconjugated
Storage:	Store the antibody undiluted at 2-8°C for one month or (in aliquots) at -20°C for longer. Avoid repeated freezing and thawing.
Stability:	Shelf life: one year from despatch.
Predicted Protein Size:	74804 Da
Gene Name:	arachidonate 15-lipoxygenase
Database Link:	<a href="#">Entrez Gene 246 Human P16050</a>
Background:	ALOX15 converts arachidonic acid to 15S-hydroperoxyeicosatetraenoic acid. The protein also acts on C-12 of arachidonate as well as on linoleic acid.



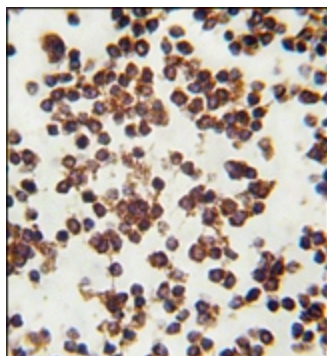
[View online »](#)

**Synonyms:** 15-LOX, Arachidonate 15-lipoxygenase

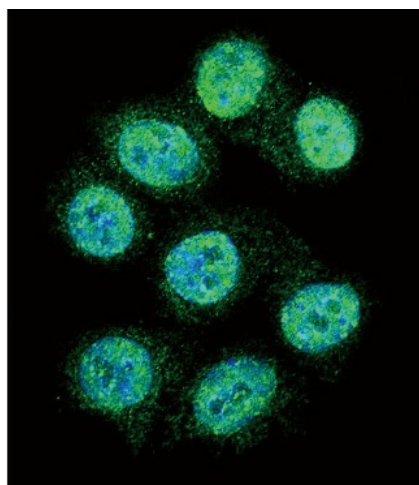
**Product images:**



ALOX15 Antibody (C-term) western blot analysis in HeLa (Lane 1), A549 (Lane 2), K562 (Lane 3), MDA-MB435 (Lane 4) cell line lysates (35ug/lane). This demonstrates the ALOX15 antibody detected the ALOX15 protein (arrow).



Formalin-fixed and paraffin-embedded human lymph tissue reacted with ALOX15 antibody (C-term), which was peroxidase-conjugated to the secondary antibody, followed by DAB staining.



Confocal immunofluorescent analysis of ALOX15 Antibody (C-term) with HeLa cell followed by Alexa Fluor 488-conjugated goat anti-rabbit IgG (green). DAPI was used to stain the cell nuclear (blue).